



Retail Property For Sale

Dade City Retail / Office / Car Lot

10405 US-301, Dade City, FL 33525

For More Information:

813-254-6756 | EXT 31

Michael Braccia, P.A. | mike@baystreetcommercial.com

Scott Shimberg | scott@baystreetcommercial.com





Dade City Retail / Office / Car Lot

10405 US-301, Dade City, FL 33525

Executive Summary



OFFERING SUMMARY

Sale Price:	N/A
Price / SF:	-
Lot Size:	9,173 SF
Year Built:	1957
Building Size:	1,513 SF
Zoning:	C2 - General Commercial
Market:	Tampa-St Petersburg- Clearwater

PROPERTY OVERVIEW

This 1,513 SF freestanding building is located on a 9,173 SF C2 zoned lot on busy Hwy 301 in between Dade City and Zephyrhills and is the former home of Hillside Auto Sales. The building has a small office in the front, as well as a rear storage room and open canopy area for car sales. With great visibility, and over 30,000 VPD traffic count, this location is perfect for another car lot or a variety of other retail businesses.

LOCATION OVERVIEW

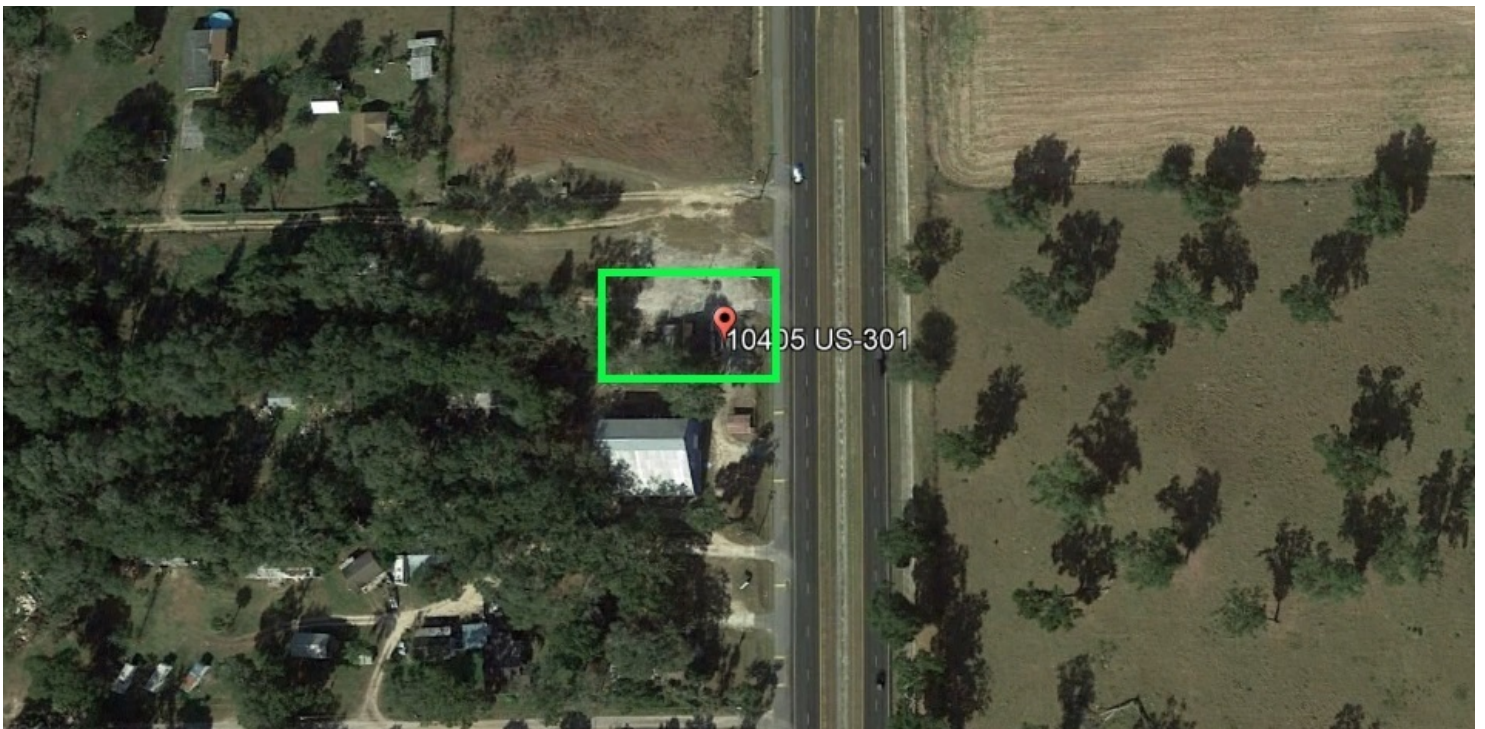
Located between Zephyrhills and Dade City in Central / NE Pasco County east of Lake Gilbert, a small and serene lake bordered by pine forest to the west and an easy commute to Dade City, Zephyrhills, Brooksville, Land O Lakes, Lutz, North Tampa, and New Tampa.



Dade City Retail / Office / Car Lot

10405 US-301, Dade City, FL 33525

Additional Photos



Bay Street Commercial | 611 West Bay Street | Tampa, FL 33606 | 813.625.2375 | www.baystreetcommercial.com

3

For More Information:

813-254-6756 | EXT 31

Property Webpage: www.properties.baystreetcommercial.com/475951-sale

Michael Braccia, P.A. | mike@baystreetcommercial.com

Scott Shimberg | scott@baystreetcommercial.com

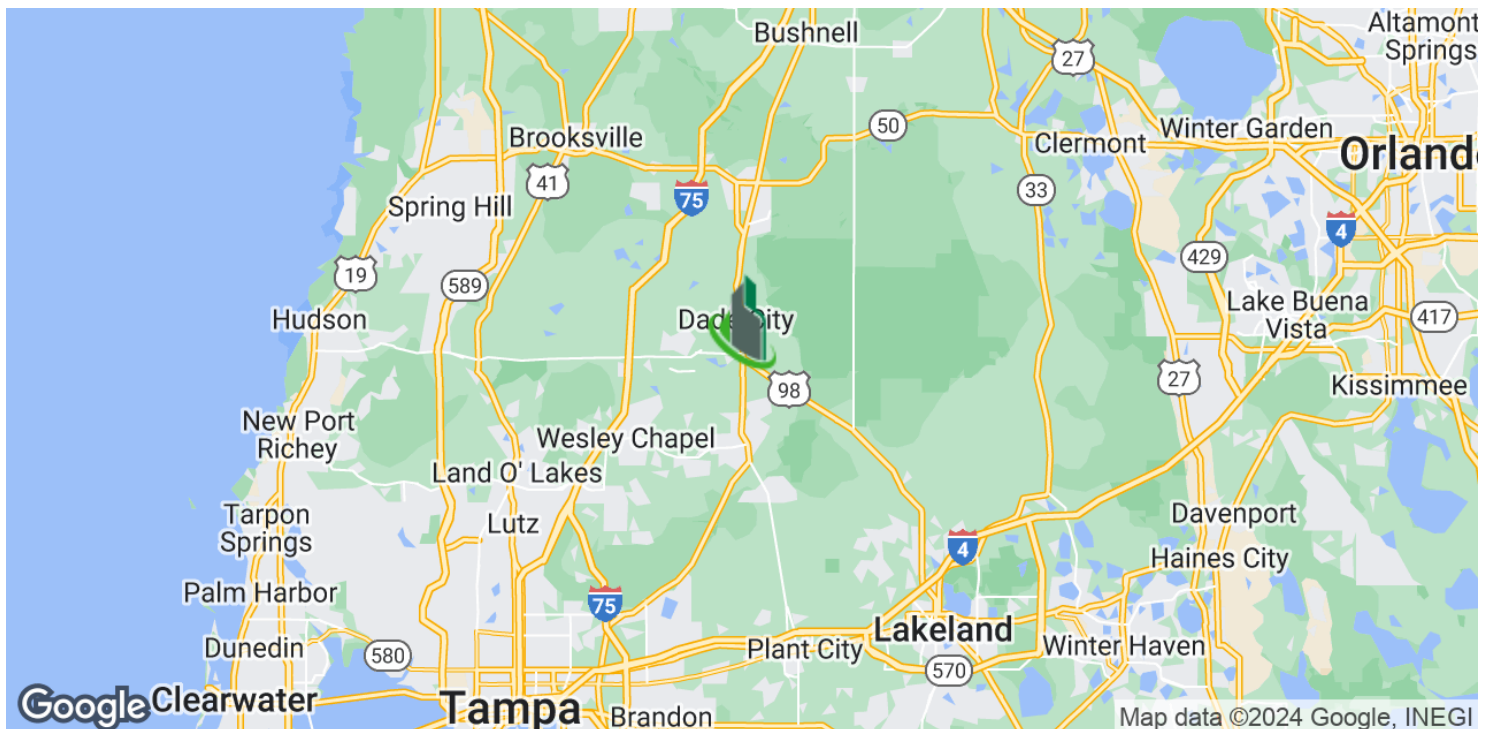




Dade City Retail / Office / Car Lot

10405 US-301, Dade City, FL 33525

Location Maps



Bay Street Commercial | 611 West Bay Street | Tampa, FL 33606 | 813.625.2375 | www.baystreetcommercial.com

4

For More Information:

813-254-6756 | EXT 31

Property Webpage: www.properties.baystreetcommercial.com/475951-sale

Michael Braccia, P.A. | mike@baystreetcommercial.com

Scott Shimberg | scott@baystreetcommercial.com

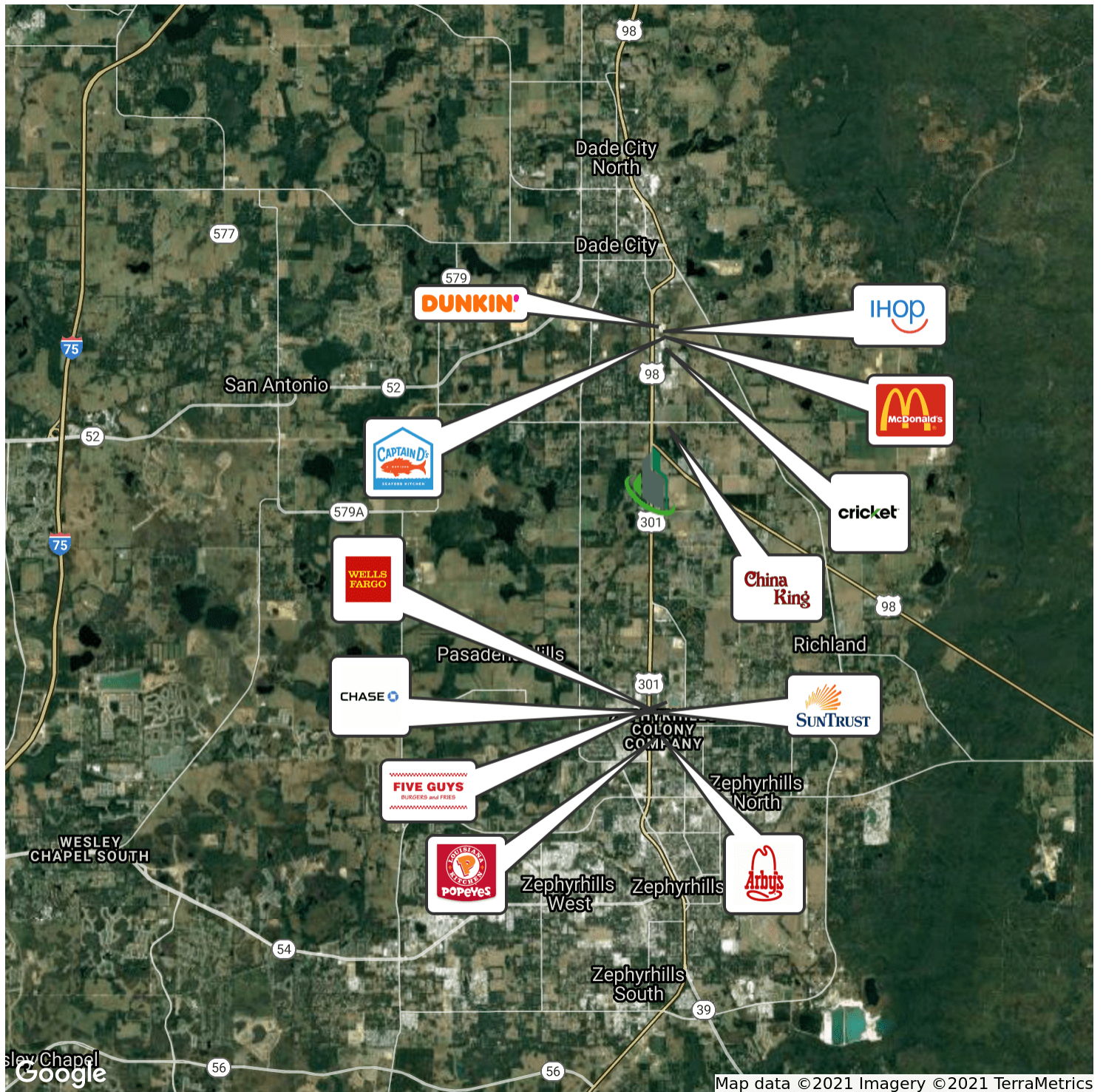




Dade City Retail / Office / Car Lot

10405 US-301, Dade City, FL 33525

Retailer Map



Bay Street Commercial | 611 West Bay Street | Tampa, FL 33606 | 813.625.2375 | www.baystreetcommercial.com

5

For More Information:

813-254-6756 | EXT 31

Property Webpage: www.properties.baystreetcommercial.com/475951-sale

Michael Braccia, P.A. | mike@baystreetcommercial.com

Scott Shimberg | scott@baystreetcommercial.com





Dade City Retail / Office / Car Lot

10405 US-301, Dade City, FL 33525

Aerial Map



Imagery ©2024 Airbus, Maxar Technologies, U.S. Geological Survey

Bay Street Commercial | 611 West Bay Street | Tampa, FL 33606 | 813.625.2375 | www.baystreetcommercial.com

6

For More Information:

813-254-6756 | EXT 31

Property Webpage: www.properties.baystreetcommercial.com/475951-sale

Michael Braccia, P.A. | mike@baystreetcommercial.com

Scott Shimberg | scott@baystreetcommercial.com

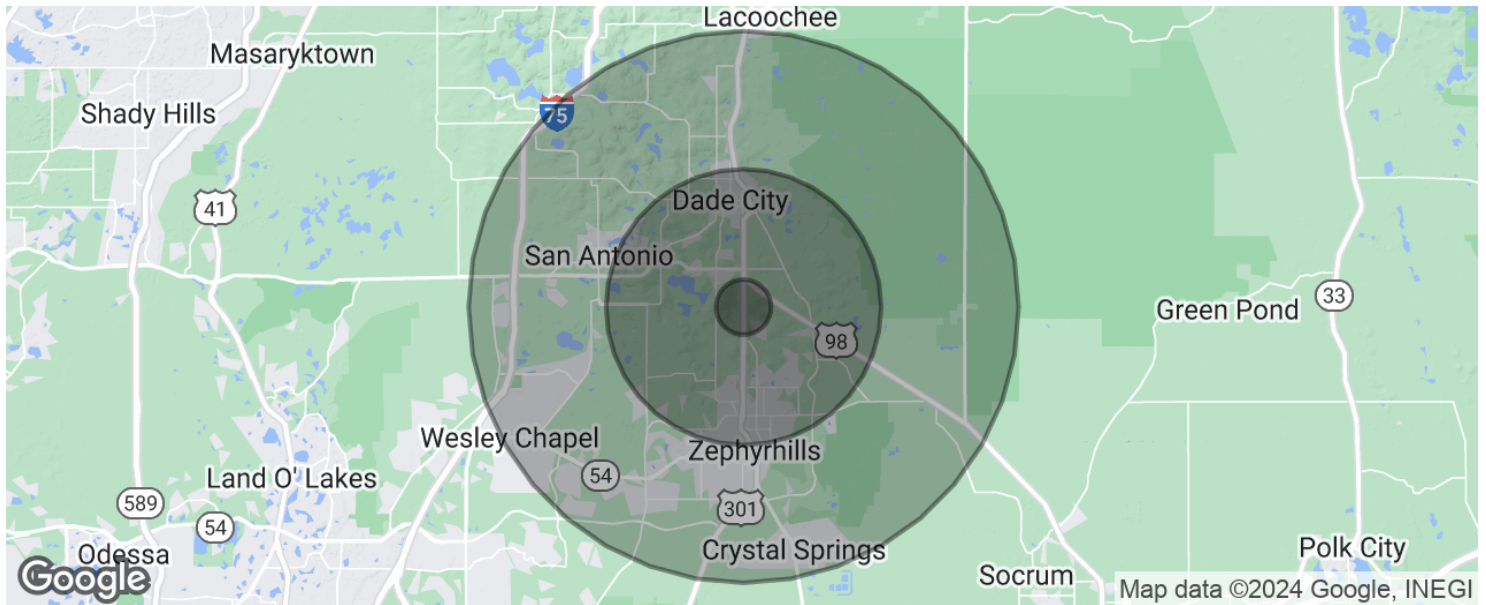




Dade City Retail / Office / Car Lot

10405 US-301, Dade City, FL 33525

Demographics Map & Report



POPULATION

	1 MILE	5 MILES	10 MILES
Total population	960	48,367	106,181
Median age	46.3	45.4	46.3
Median age (Male)	43.9	43.3	44.7
Median age (Female)	48.5	47.2	47.6

HOUSEHOLDS & INCOME

	1 MILE	5 MILES	10 MILES
Total households	357	18,891	42,218
# of persons per HH	2.7	2.6	2.5
Average HH income	\$61,433	\$50,264	\$51,797
Average house value		\$137,026	\$168,245

ETHNICITY (%)

	1 MILE	5 MILES	10 MILES
Hispanic	5.2%	12.9%	13.0%

RACE

	1 MILE	5 MILES	10 MILES
% White	92.1%	86.9%	87.4%
% Black	3.1%	7.5%	6.5%
% Asian	0.0%	0.5%	0.9%

For More Information:

813-254-6756 | EXT 31

Property Webpage: www.properties.baystreetcommercial.com/475951-sale

Michael Braccia, P.A. | mike@baystreetcommercial.com

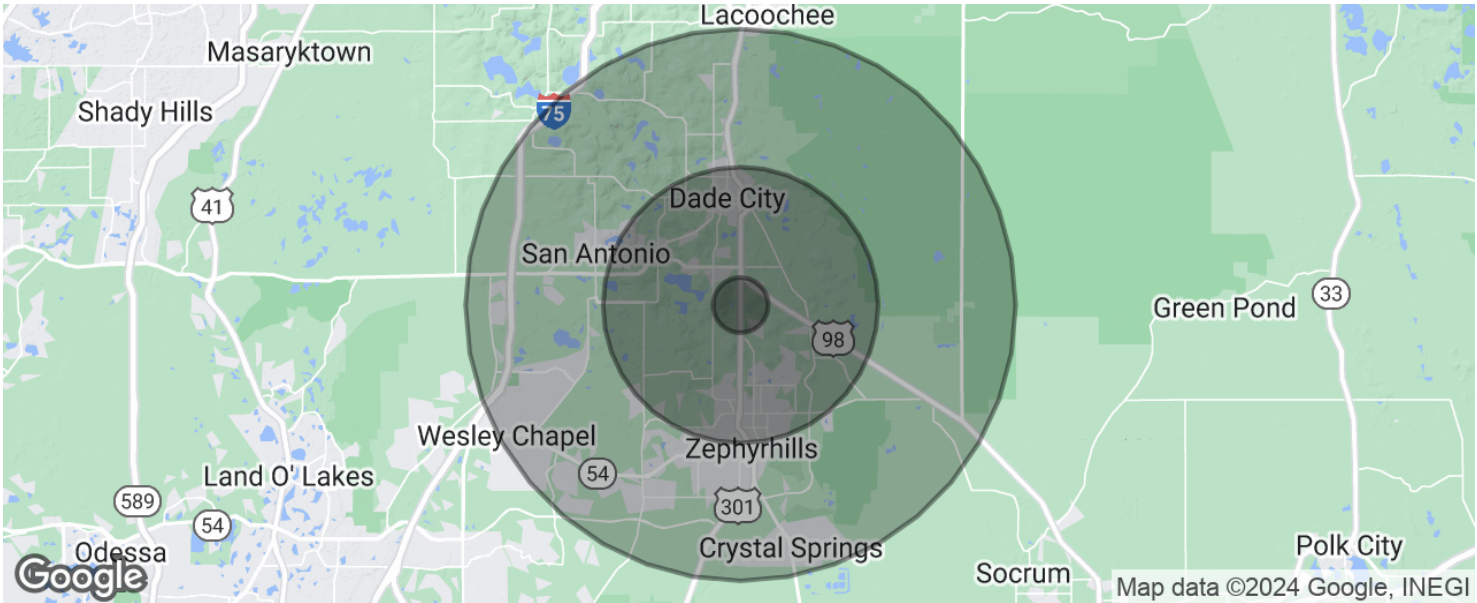
Scott Shimberg | scott@baystreetcommercial.com



Dade City Retail / Office / Car Lot

10405 US-301, Dade City, FL 33525

Demographics Map & Report



% Hawaiian	0.0%	0.0%	0.0%
% American Indian	0.6%	0.4%	0.6%
% Other	2.0%	2.5%	2.4%

* Demographic data derived from 2020 ACS - US Census