



Residential Property For Sale

Tampa CityHomes

2913 N 22nd St, Tampa, FL 33605

For More Information:

813-376-5969 | EXT

Scott Shimberg | scott@baystreetcommercial.com





Tampa CityHomes

2913 N 22nd St, Tampa, FL 33605

Executive Summary



OFFERING SUMMARY

Sale Price:	\$185,000
Price / SF:	\$134.55
Number Of Units:	1
Lot Size:	3,690 SF
Year Built:	2017
Building Size:	1,375 SF
Zoning:	CG
Market:	Tampa-St. Petersburg- Clearwater
Submarket:	Ybor City

PROPERTY OVERVIEW

NEW CONSTRUCTION - Perfect for an investor or homeowner. Tampa CityHomes just minutes from downtown Tampa, north of Ybor City. Three newly-constructed, adjacent homes. Additional homesites available, additional inventory to be constructed. These three bedroom, two bath, metal roof, single family homes are constructed to low-maintenance specifications; from vinyl wood waterproof flooring to Sterling Ensemble shower systems, European styled cabinetry, window blinds, luxury vinyl flooring throughout, exterior paint-free vinyl siding and rough sawn cedar trim, bungalow-styled front porches and railings. Parking in rear alleyway.

LOCATION OVERVIEW

Located in East Tampa, just north of Ybor City, E. Columbus Drive, I-4, and east of I-275.



Tampa CityHomes

2913 N 22nd St, Tampa, FL 33605

Additional Photos





Tampa CityHomes

2913 N 22nd St, Tampa, FL 33605

Additional Photos



Bay Street Commercial | 611 West Bay Street | Tampa, FL 33606 | 813.625.2375 | www.baystreetcommercial.com

4

For More Information:

813-376-5969 | EXT

Property Webpage: www.properties.baystreetcommercial.com/198518-sale

Scott Shimberg | scott@baystreetcommercial.com





Tampa CityHomes

2913 N 22nd St, Tampa, FL 33605

Additional Photos



Bay Street Commercial | 611 West Bay Street | Tampa, FL 33606 | 813.625.2375 | www.baystreetcommercial.com

5

For More Information:

813-376-5969 | EXT

Property Webpage: www.properties.baystreetcommercial.com/198518-sale

Scott Shimberg | scott@baystreetcommercial.com

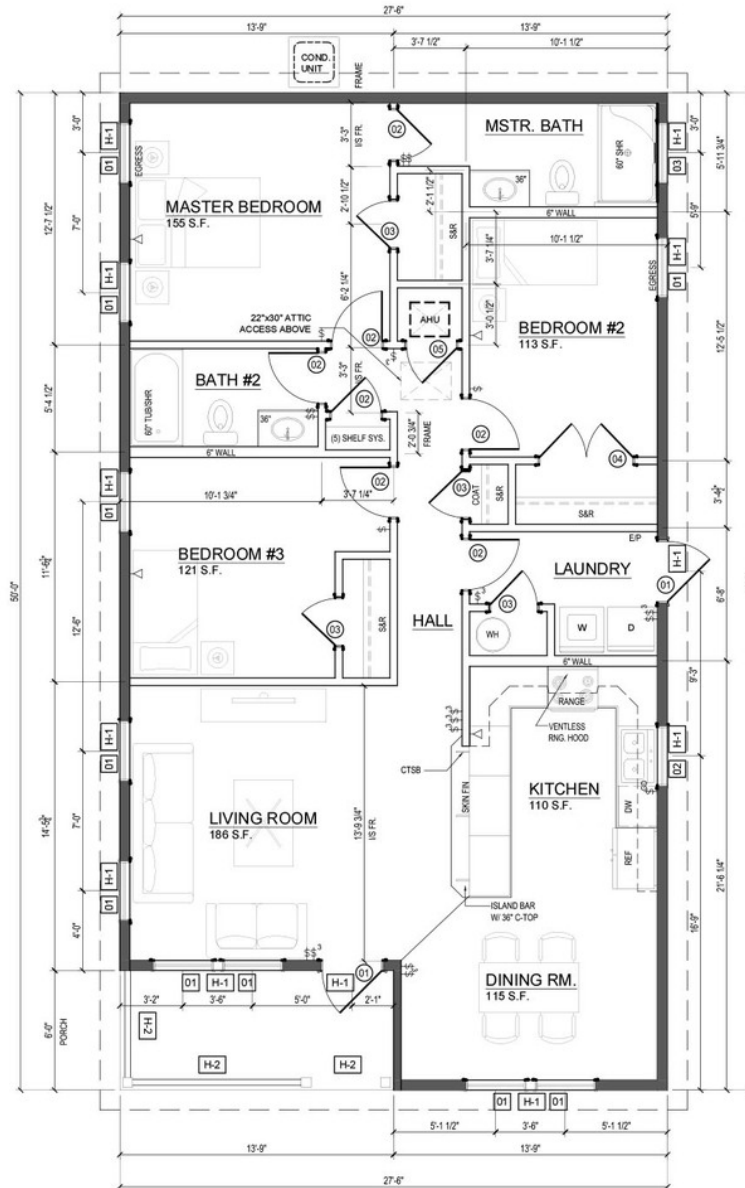




Tampa CityHomes

2913 N 22nd St, Tampa, FL 33605

Floor Plan



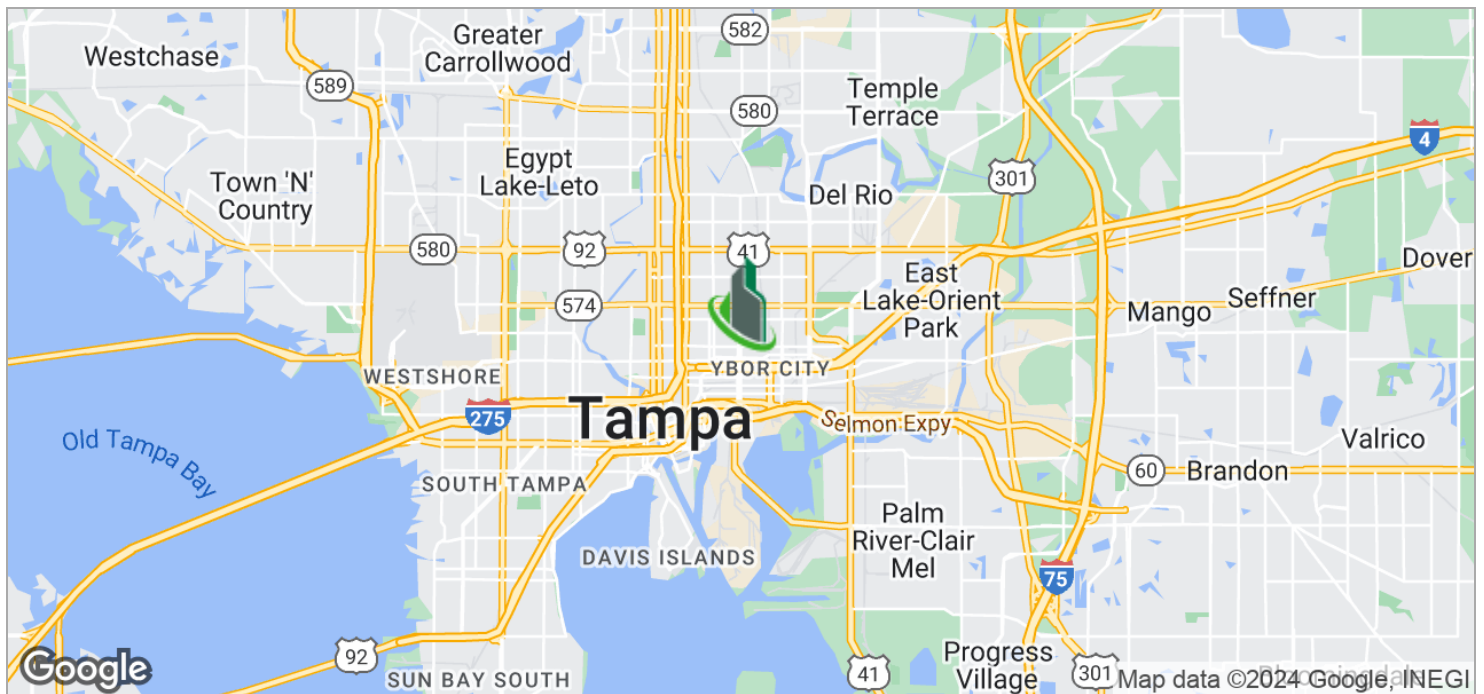
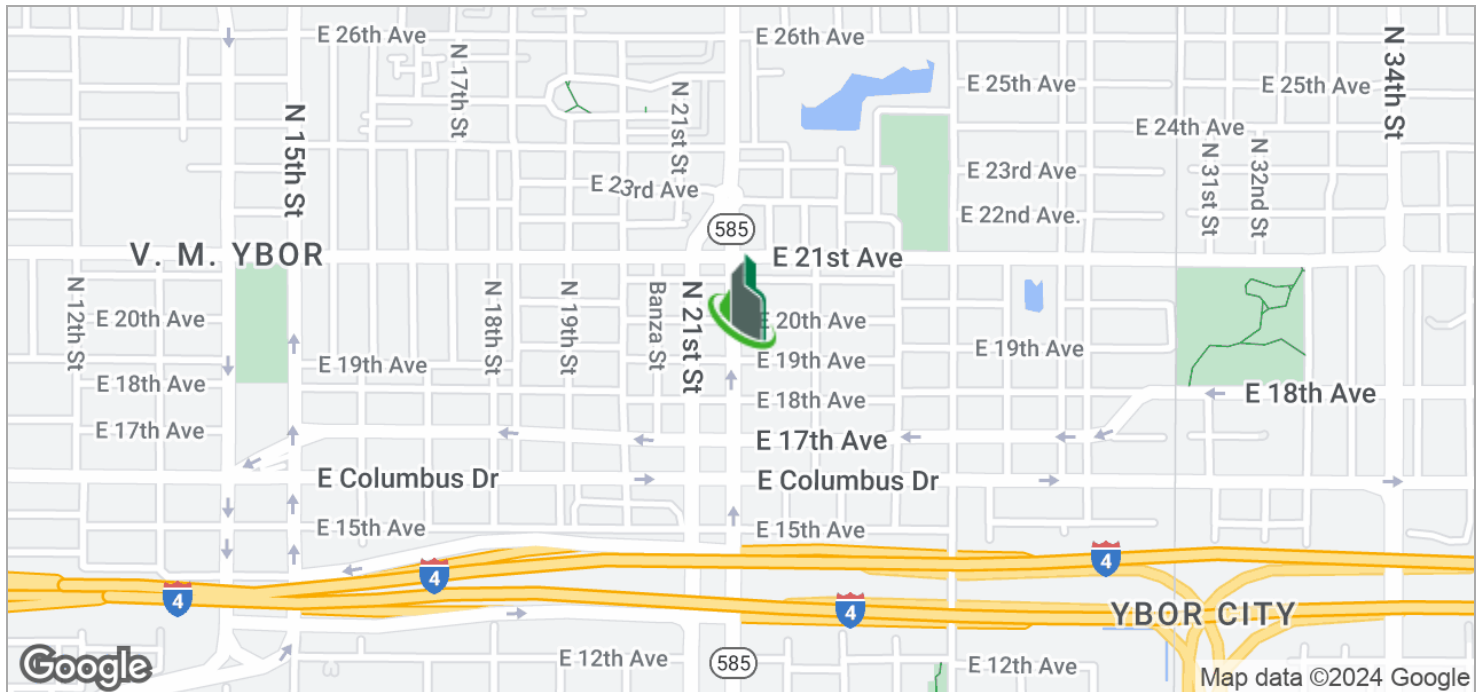




Tampa CityHomes

2913 N 22nd St, Tampa, FL 33605

Location Maps



Bay Street Commercial | 611 West Bay Street | Tampa, FL 33606 | 813.625.2375 | www.baystreetcommercial.com

9

For More Information:

813-376-5969 | EXT

Property Webpage: www.properties.baystreetcommercial.com/198518-sale

Scott Shimberg | scott@baystreetcommercial.com

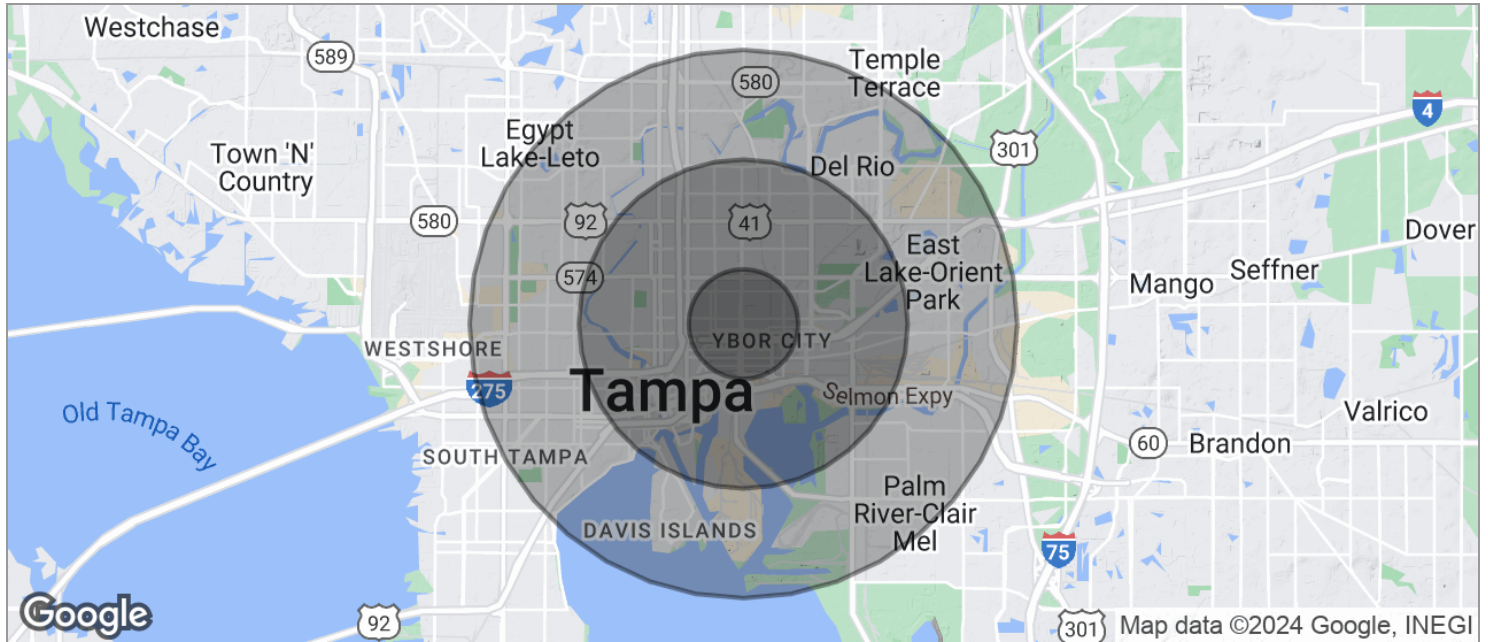




Tampa CityHomes

2913 N 22nd St, Tampa, FL 33605

Demographics Map



	1 MILE	3 MILES	5 MILES
POPULATION			
TOTAL POPULATION	12,884	88,607	233,365
MEDIAN AGE	33.5	33.2	34.9
MEDIAN AGE (MALE)	32.4	30.9	33.4
MEDIAN AGE (FEMALE)	33.8	34.9	36.1
HOUSEHOLDS & INCOME			
TOTAL HOUSEHOLDS	4,824	34,239	91,654
# OF PERSONS PER HH	2.7	2.6	2.5
AVERAGE HH INCOME	\$33,626	\$49,654	\$53,494
AVERAGE HOUSE VALUE	\$134,617	\$240,061	\$267,704
RACE			
% WHITE	25.0%	43.0%	56.2%
% BLACK	70.8%	51.1%	36.2%
% ASIAN	0.2%	1.0%	1.4%
% HAWAIIAN	0.0%	0.0%	0.0%
% INDIAN	1.1%	1.1%	1.1%
% OTHER	1.8%	2.1%	2.9%
ETHNICITY			
% HISPANIC	19.5%	19.4%	28.5%

* Demographic data derived from 2020 ACS - US Census

For More Information:

813-376-5969 | EXT

Property Webpage: www.properties.baystreetcommercial.com/198518-sale

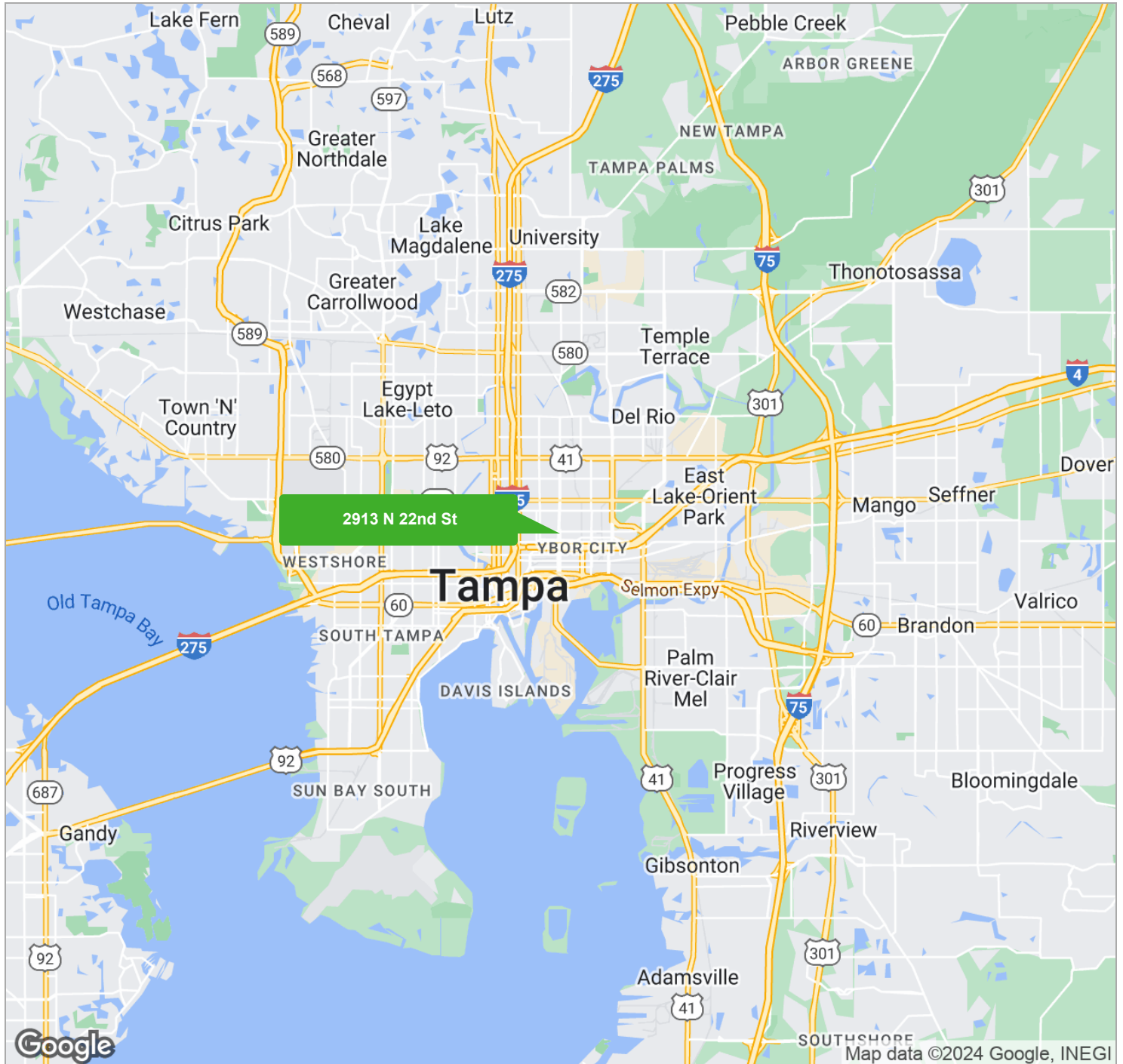
Scott Shimberg | scott@baystreetcommercial.com



Tampa CityHomes

2913 N 22nd St, Tampa, FL 33605

Regional Map



For More Information:

813-376-5969 | EXT

Property Webpage: www.properties.baystreetcommercial.com/198518-sale

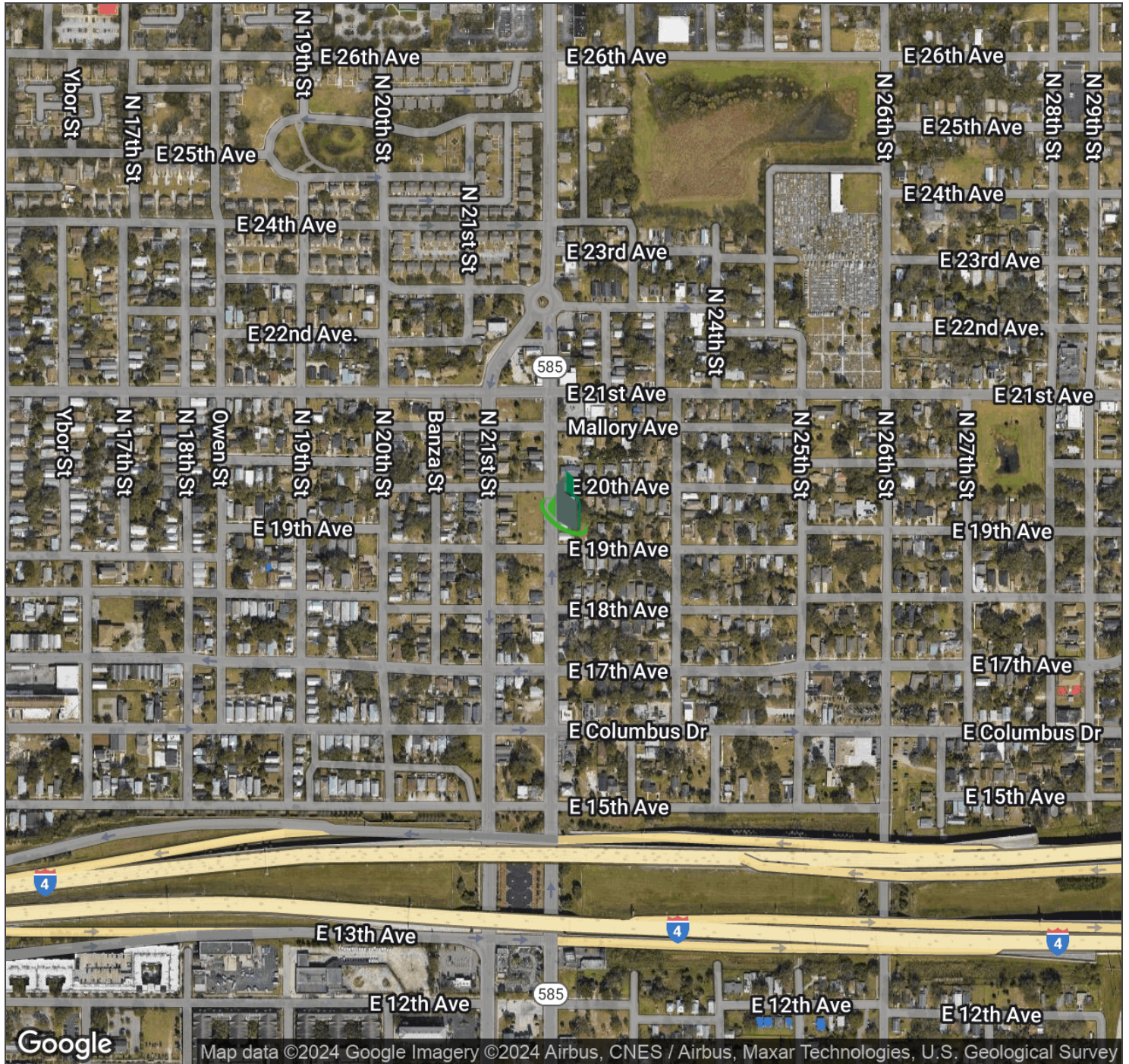
Scott Shimberg | scott@baystreetcommercial.com



Tampa CityHomes

2913 N 22nd St, Tampa, FL 33605

Aerial Map



Bay Street Commercial | 611 West Bay Street | Tampa, FL 33606 | 813.625.2375 | www.baystreetcommercial.com

12

For More Information:

813-376-5969 | EXT

Property Webpage: www.properties.baystreetcommercial.com/198518-sale

Scott Shimberg | scott@baystreetcommercial.com

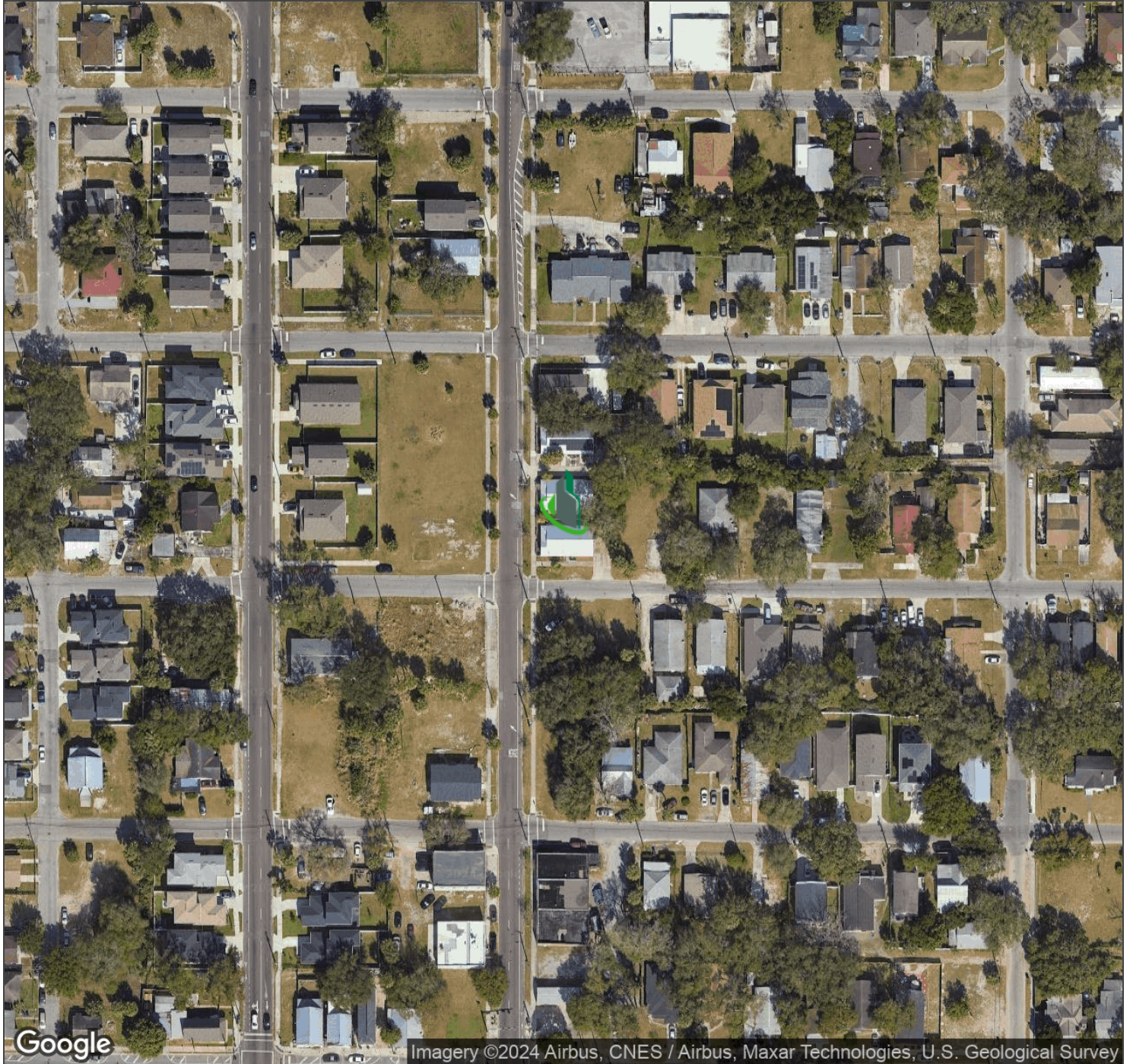




Tampa CityHomes

2913 N 22nd St, Tampa, FL 33605

Aerial Map

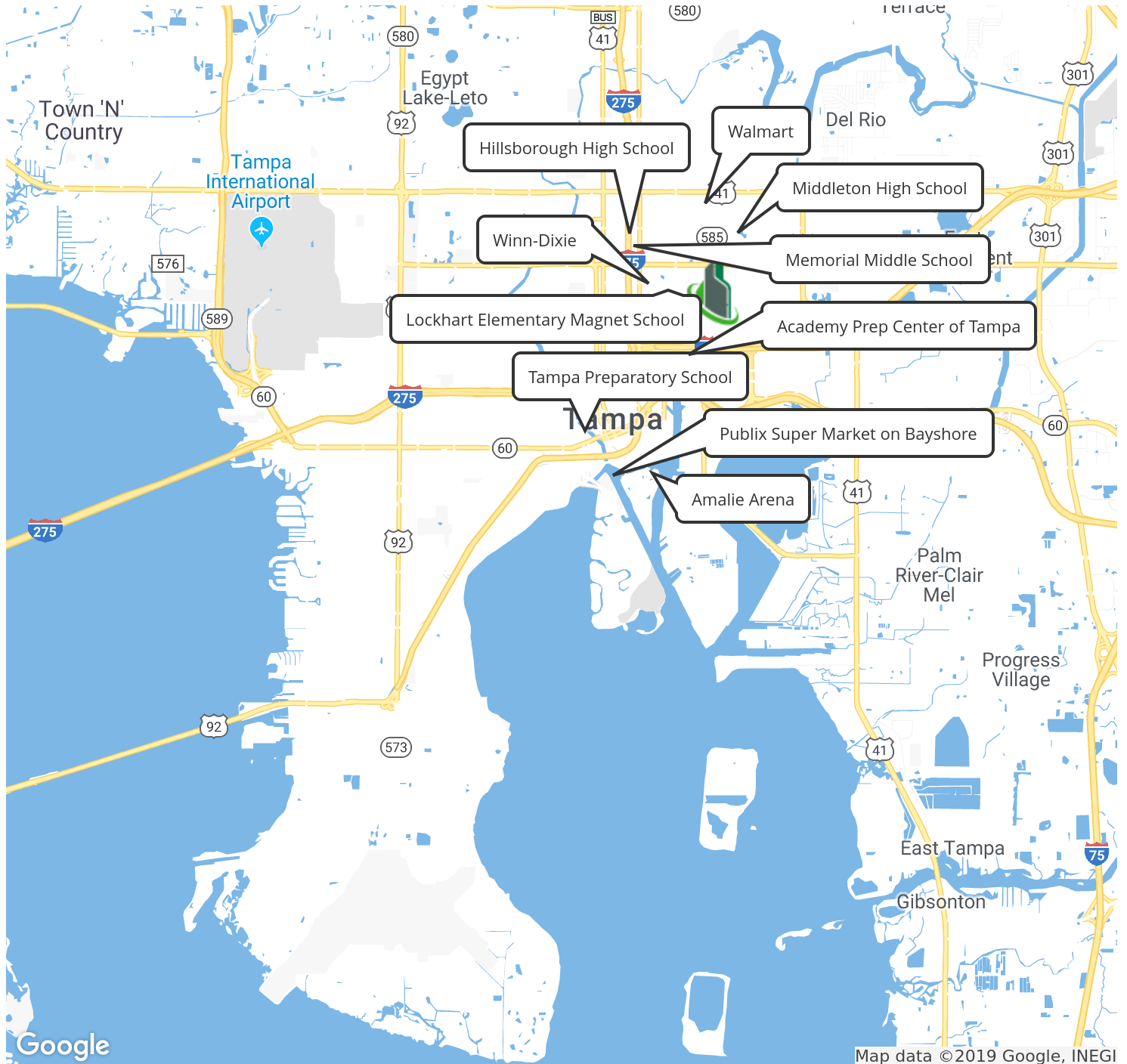




Tampa CityHomes

2913 N 22nd St, Tampa, FL 33605

Nearby Locations





Tampa CityHomes

2913 N 22nd St, Tampa, FL 33605

Adjacent Property Listings

