



Land For Sale

East Tampa - Orient Park Buildable Lot

7409 E 23rd Ave, Tampa, FL 33619

For More Information:

813-254-6756 | EXT 78

Michael Braccia, P.A. | mike@baystreetcommercial.com

Scott Shimberg | scott@baystreetcommercial.com





East Tampa - Orient Park Buildable Lot

7409 E 23rd Ave, Tampa, FL 33619

Executive Summary



OFFERING SUMMARY

Sale Price:	\$27,900
Price / Acre:	\$138,105
Cap Rate:	0.0%
NOI:	\$0
Lot Size:	8,800 SF
Zoning:	RDC-12
Market:	Tampa-St. Petersburg- Clearwater
Submarket:	East Tampa

PROPERTY OVERVIEW

This Orient Park buildable lot measures 110 x 80 and is currently zoned RDC-12 (Residential Duplex Convention (12 units / acre) and can accommodate two units.

LOCATION OVERVIEW

Located one block east of Orient Road and just over one mile south of the Seminole Hard Rock Casino and the Florida State Fairgrounds.

For More Information:

813-254-6756 | EXT 78

Property Webpage: www.properties.baystreetcommercial.com/158377-sale

Michael Braccia, P.A. | mike@baystreetcommercial.com

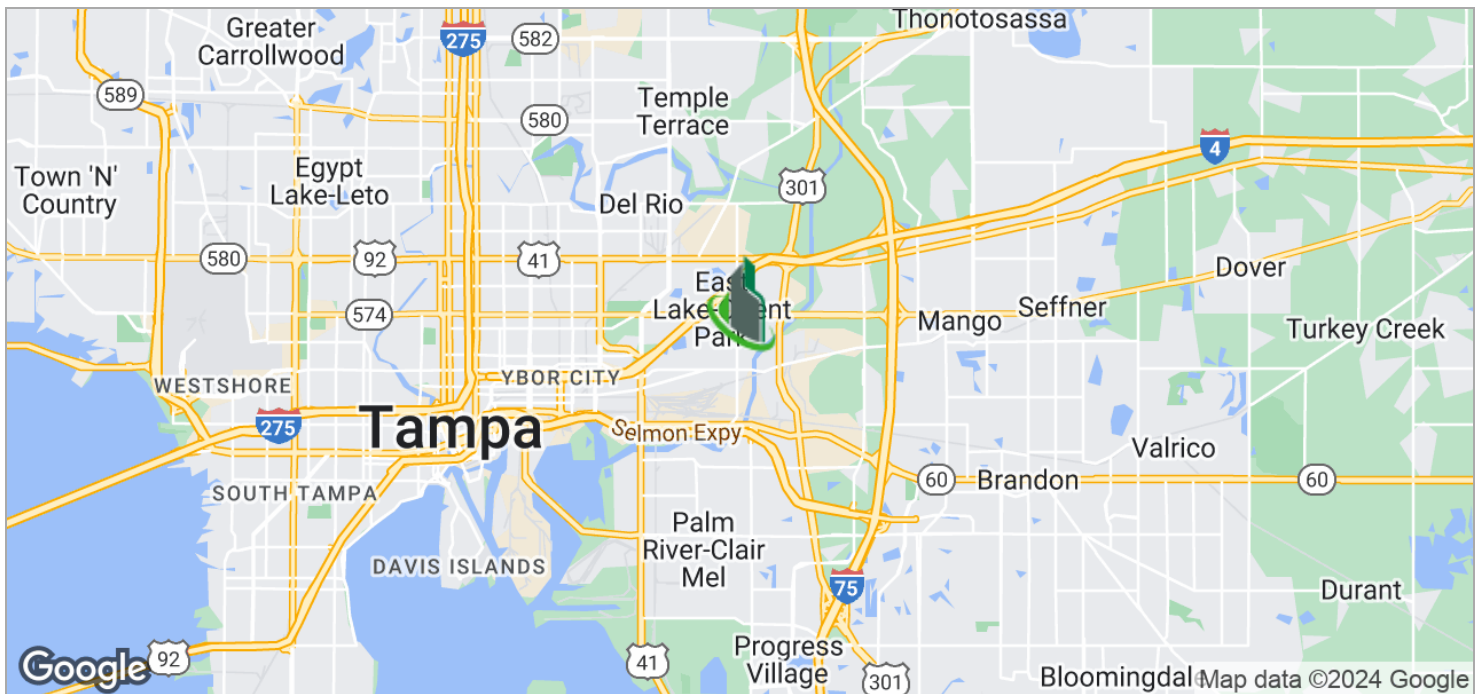
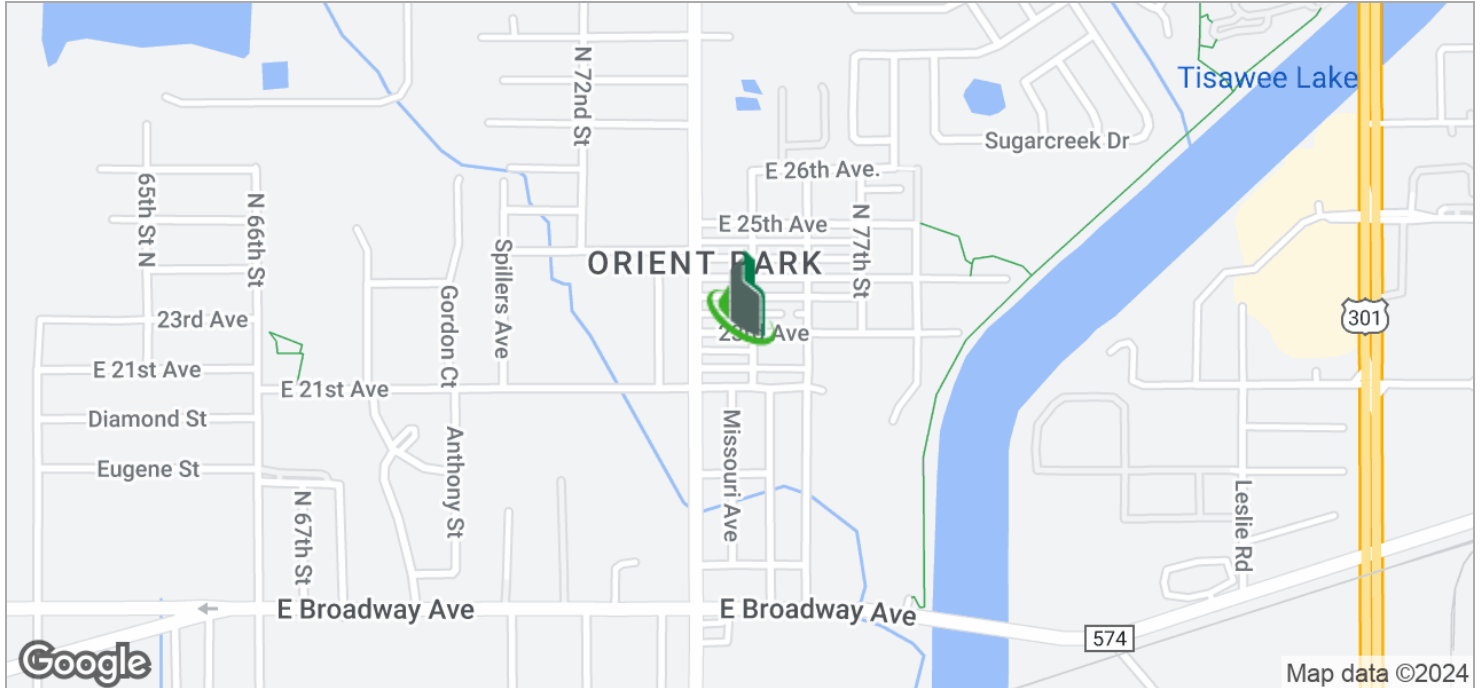
Scott Shimberg | scott@baystreetcommercial.com



East Tampa - Orient Park Buildable Lot

7409 E 23rd Ave, Tampa, FL 33619

Location Maps



For More Information:

813-254-6756 | EXT 78

Property Webpage: www.properties.baystreetcommercial.com/158377-sale

Michael Braccia, P.A. | mike@baystreetcommercial.com

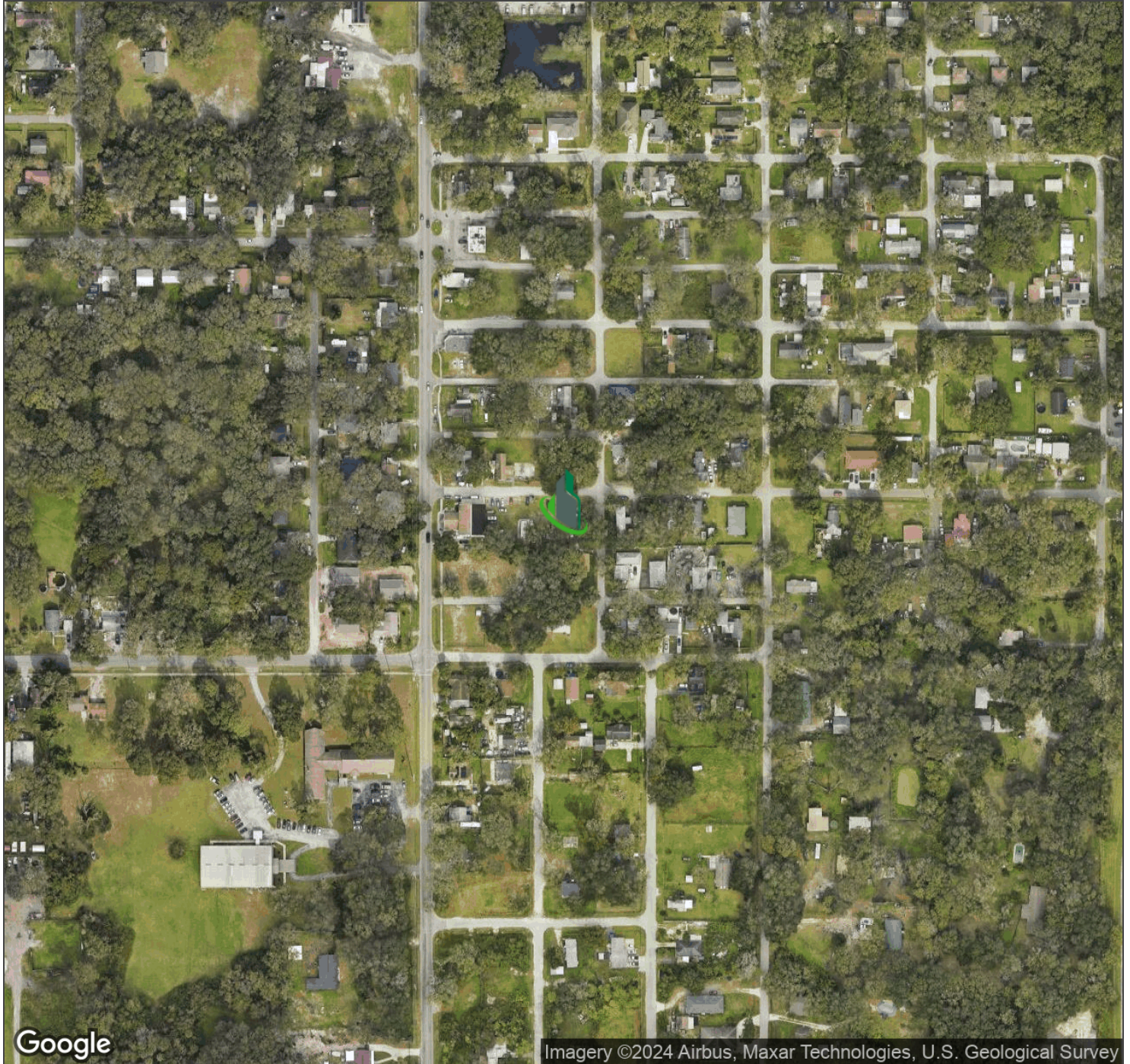
Scott Shimberg | scott@baystreetcommercial.com



East Tampa - Orient Park Buildable Lot

7409 E 23rd Ave, Tampa, FL 33619

Aerial Map



Bay Street Commercial | 611 West Bay Street | Tampa, FL 33606 | 813.625.2375 | www.baystreetcommercial.com

4

For More Information:

813-254-6756 | EXT 78

Property Webpage: www.properties.baystreetcommercial.com/158377-sale

Michael Braccia, P.A. | mike@baystreetcommercial.com

Scott Shimberg | scott@baystreetcommercial.com

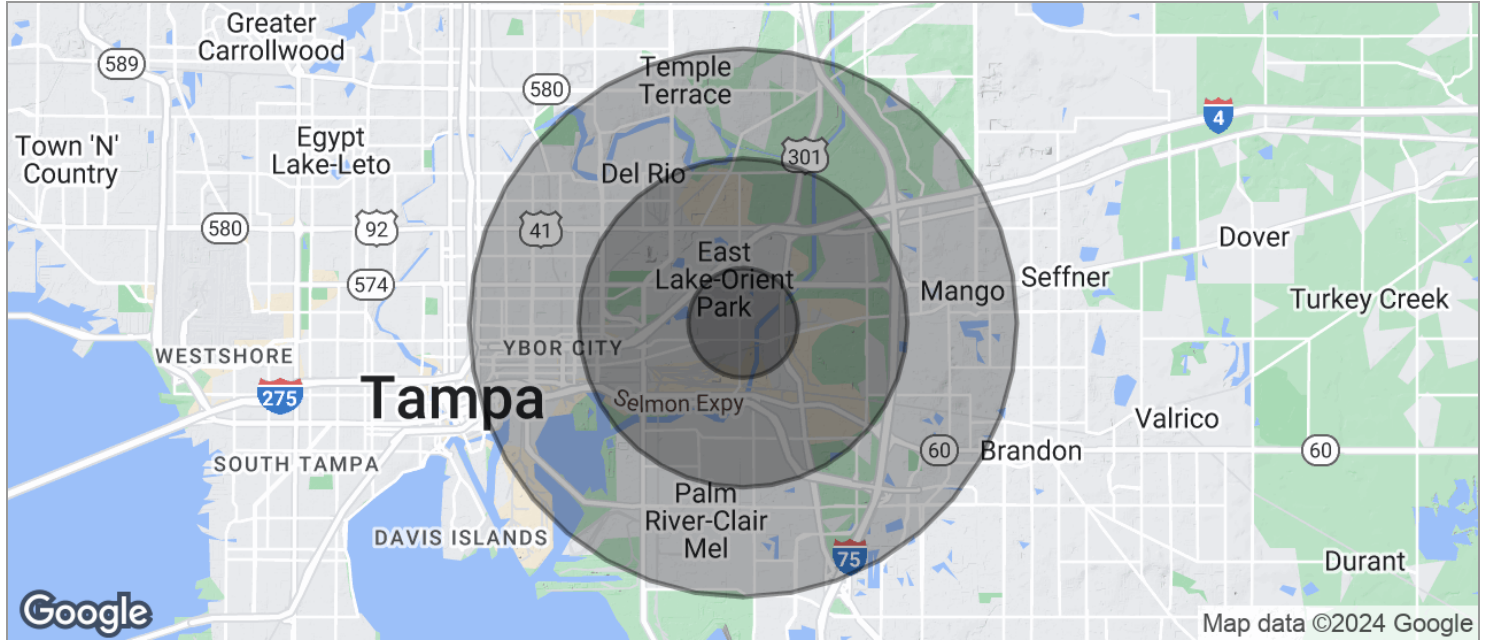




East Tampa - Orient Park Buildable Lot

7409 E 23rd Ave, Tampa, FL 33619

Demographics Map



POPULATION

	1 MILE	3 MILES	5 MILES
TOTAL POPULATION	4,381	38,895	155,706
MEDIAN AGE	33.3	33.7	33.2
MEDIAN AGE (MALE)	30.9	31.4	31.6
MEDIAN AGE (FEMALE)	36.8	35.5	34.6

HOUSEHOLDS & INCOME

	1 MILE	3 MILES	5 MILES
TOTAL HOUSEHOLDS	1,308	12,675	57,465
# OF PERSONS PER HH	3.3	3.1	2.7
AVERAGE HH INCOME	\$41,507	\$43,813	\$45,255
AVERAGE HOUSE VALUE		\$141,260	\$164,302

RACE

	1 MILE	3 MILES	5 MILES
% WHITE	58.1%	54.0%	51.0%
% BLACK	35.4%	37.2%	41.1%
% ASIAN	0.5%	2.3%	1.6%
% HAWAIIAN	0.0%	0.0%	0.0%
% INDIAN	0.5%	0.8%	0.8%
% OTHER	2.4%	3.1%	3.1%

ETHNICITY

	1 MILE	3 MILES	5 MILES
% HISPANIC	25.1%	26.7%	22.1%

* Demographic data derived from 2020 ACS - US Census

For More Information:

813-254-6756 | EXT 78

Property Webpage: www.properties.baystreetcommercial.com/158377-sale

Michael Braccia, P.A. | mike@baystreetcommercial.com

Scott Shimberg | scott@baystreetcommercial.com