



Land For Sale

East Tampa - Orient Park Buildable Lot

**7409 E 23rd Ave, Tampa, FL 33619**

**For More Information:**

813-254-6756 | EXT 78

**Michael Braccia, P.A.** | [mike@baystreetcommercial.com](mailto:mike@baystreetcommercial.com)

**Scott Shimberg** | [scott@baystreetcommercial.com](mailto:scott@baystreetcommercial.com)





## East Tampa - Orient Park Buildable Lot

# 7409 E 23rd Ave, Tampa, FL 33619

### Executive Summary



#### OFFERING SUMMARY

**Available SF:**

**Lease Rate:**

Negotiable

**Lot Size:**

8,800 SF

**Zoning:**

RDC-12

**Market:**

Tampa-St.  
Petersburg-  
Clearwater

**Submarket:**

East Tampa

#### PROPERTY OVERVIEW

This Orient Park buildable lot measures 110 x 80 and is currently zoned RDC-12 (Residential Duplex Convention (12 units / acre) and can accommodate two units.

#### LOCATION OVERVIEW

Located one block east of Orient Road and just over one mile south of the Seminole Hard Rock Casino and the Florida State Fairgrounds.

**For More Information:**

813-254-6756 | EXT 78

Property Webpage: [www.properties.baystreetcommercial.com/158377-lease](http://www.properties.baystreetcommercial.com/158377-lease)

Michael Braccia, P.A. | [mike@baystreetcommercial.com](mailto:mike@baystreetcommercial.com)

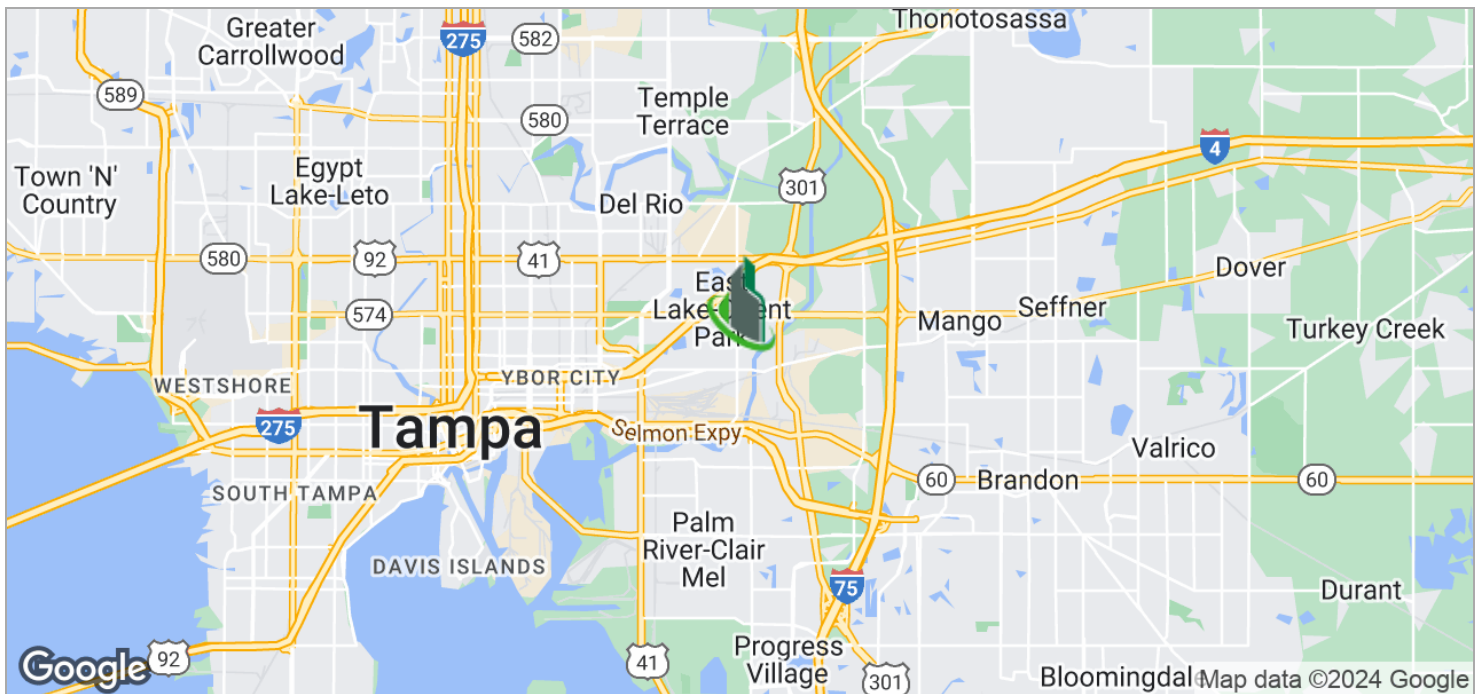
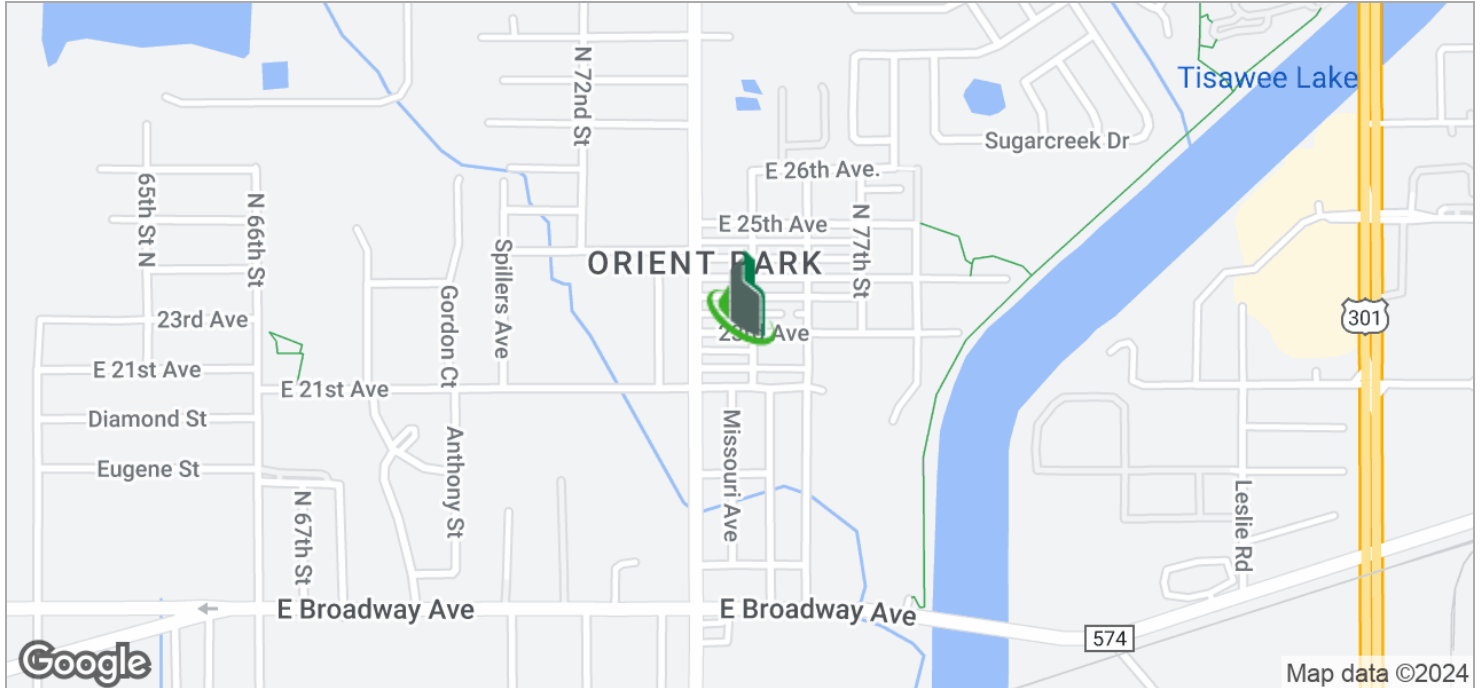
Scott Shimberg | [scott@baystreetcommercial.com](mailto:scott@baystreetcommercial.com)



## East Tampa - Orient Park Buildable Lot

# 7409 E 23rd Ave, Tampa, FL 33619

Location Maps



**For More Information:**

813-254-6756 | EXT 78

Property Webpage: [www.properties.baystreetcommercial.com/158377-lease](http://www.properties.baystreetcommercial.com/158377-lease)

Michael Braccia, P.A. | [mike@baystreetcommercial.com](mailto:mike@baystreetcommercial.com)

Scott Shimberg | [scott@baystreetcommercial.com](mailto:scott@baystreetcommercial.com)

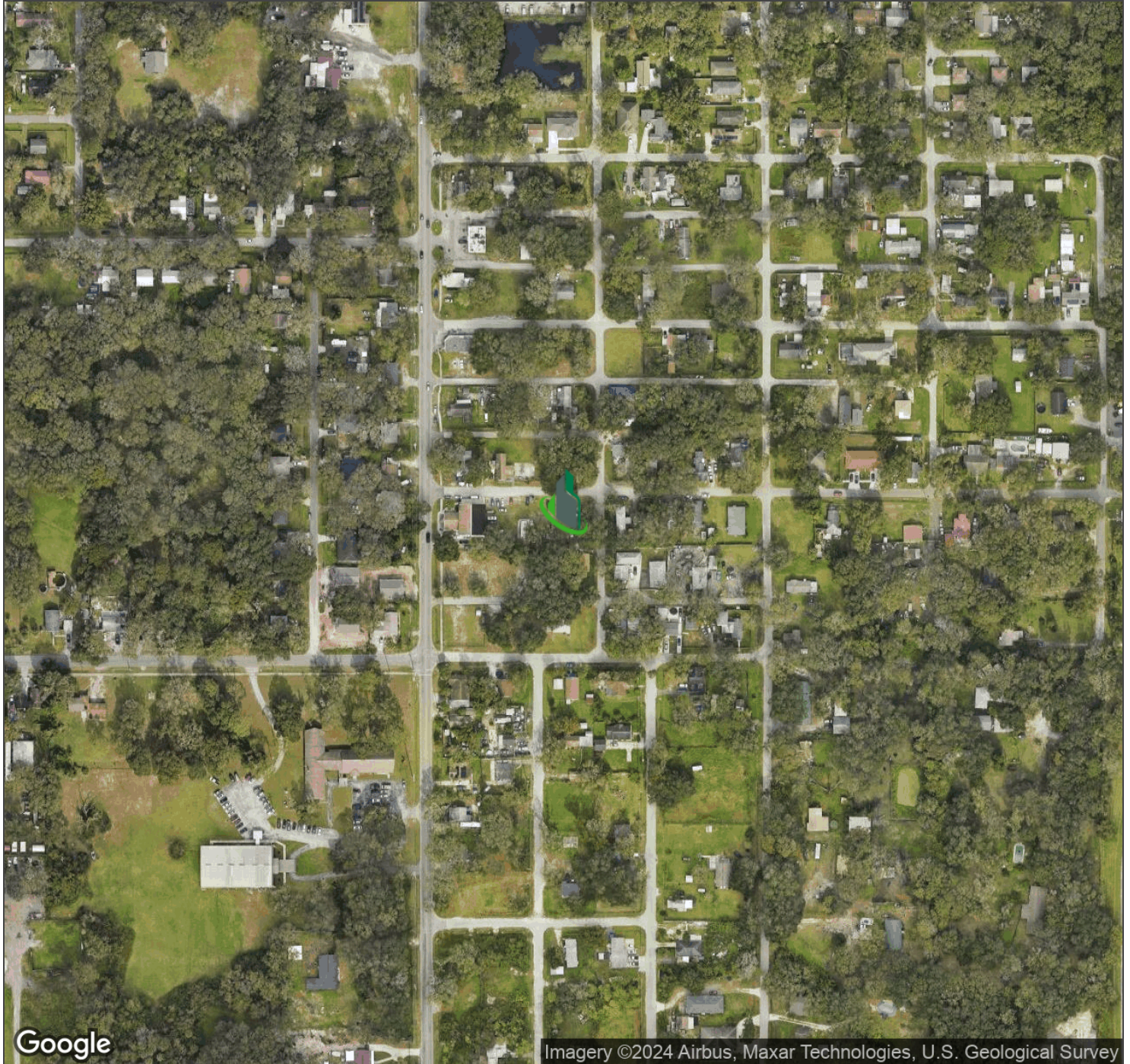




East Tampa - Orient Park Buildable Lot

**7409 E 23rd Ave, Tampa, FL 33619**

Aerial Map



Bay Street Commercial | 611 West Bay Street | Tampa, FL 33606 | 813.625.2375 | [www.baystreetcommercial.com](http://www.baystreetcommercial.com)

4

For More Information:

813-254-6756 | EXT 78

Property Webpage: [www.properties.baystreetcommercial.com/158377-lease](http://www.properties.baystreetcommercial.com/158377-lease)

Michael Braccia, P.A. | [mike@baystreetcommercial.com](mailto:mike@baystreetcommercial.com)

Scott Shimberg | [scott@baystreetcommercial.com](mailto:scott@baystreetcommercial.com)



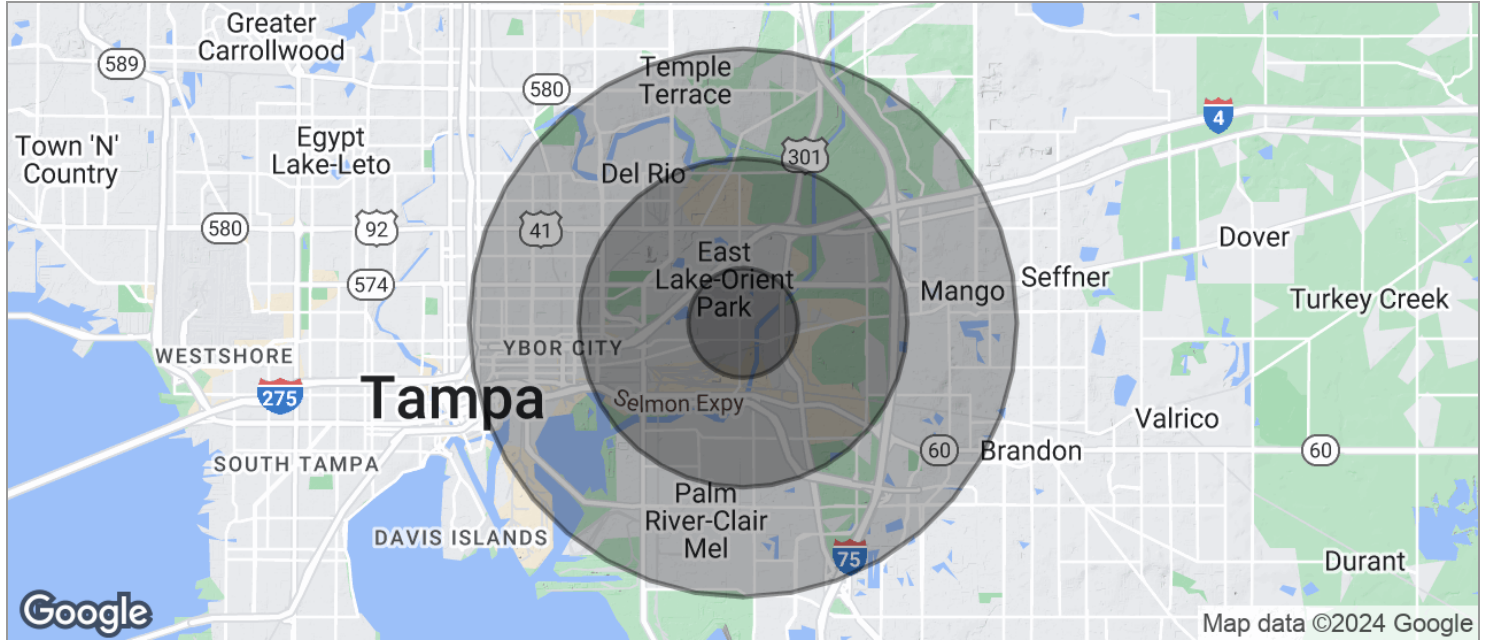




## East Tampa - Orient Park Buildable Lot

# 7409 E 23rd Ave, Tampa, FL 33619

### Demographics Map



POPULATION	1 MILE	3 MILES	5 MILES
TOTAL POPULATION	4,381	38,895	155,706
MEDIAN AGE	33.3	33.7	33.2
MEDIAN AGE (MALE)	30.9	31.4	31.6
MEDIAN AGE (FEMALE)	36.8	35.5	34.6
HOUSEHOLDS & INCOME	1 MILE	3 MILES	5 MILES
TOTAL HOUSEHOLDS	1,308	12,675	57,465
# OF PERSONS PER HH	3.3	3.1	2.7
AVERAGE HH INCOME	\$41,507	\$43,813	\$45,255
AVERAGE HOUSE VALUE		\$141,260	\$164,302
RACE	1 MILE	3 MILES	5 MILES
% WHITE	58.1%	54.0%	51.0%
% BLACK	35.4%	37.2%	41.1%
% ASIAN	0.5%	2.3%	1.6%
% HAWAIIAN	0.0%	0.0%	0.0%
% INDIAN	0.5%	0.8%	0.8%
% OTHER	2.4%	3.1%	3.1%
ETHNICITY	1 MILE	3 MILES	5 MILES
% HISPANIC	25.1%	26.7%	22.1%

\* Demographic data derived from 2020 ACS - US Census

#### For More Information:

813-254-6756 | EXT 78

Property Webpage: [www.properties.baystreetcommercial.com/158377-lease](http://www.properties.baystreetcommercial.com/158377-lease)

Michael Braccia, P.A. | [mike@baystreetcommercial.com](mailto:mike@baystreetcommercial.com)

Scott Shimberg | [scott@baystreetcommercial.com](mailto:scott@baystreetcommercial.com)