



SUITES

Office Building For Sale

SoHo Executive Suites

711 S Howard Ave , Tampa, FL 33606

For More Information:

813-254-6756 | EXT 78

Michael Braccia, P.A. | mike@baystreetcommercial.com

Scott Shimberg | scott@baystreetcommercial.com





SoHo Executive Suites

711 S Howard Ave , Tampa, FL 33606

Executive Summary



OFFERING SUMMARY

Available SF:	0 SF
Lease Rate:	Negotiable
Lot Size:	1 SF
Year Built:	2000
Building Size:	2,802 SF
Zoning:	PD - Planned Development
Market:	Tampa-St Petersburg- Clearwater
Submarket:	South Tampa
Traffic Count:	10,500

PROPERTY OVERVIEW

LOCATION OVERVIEW

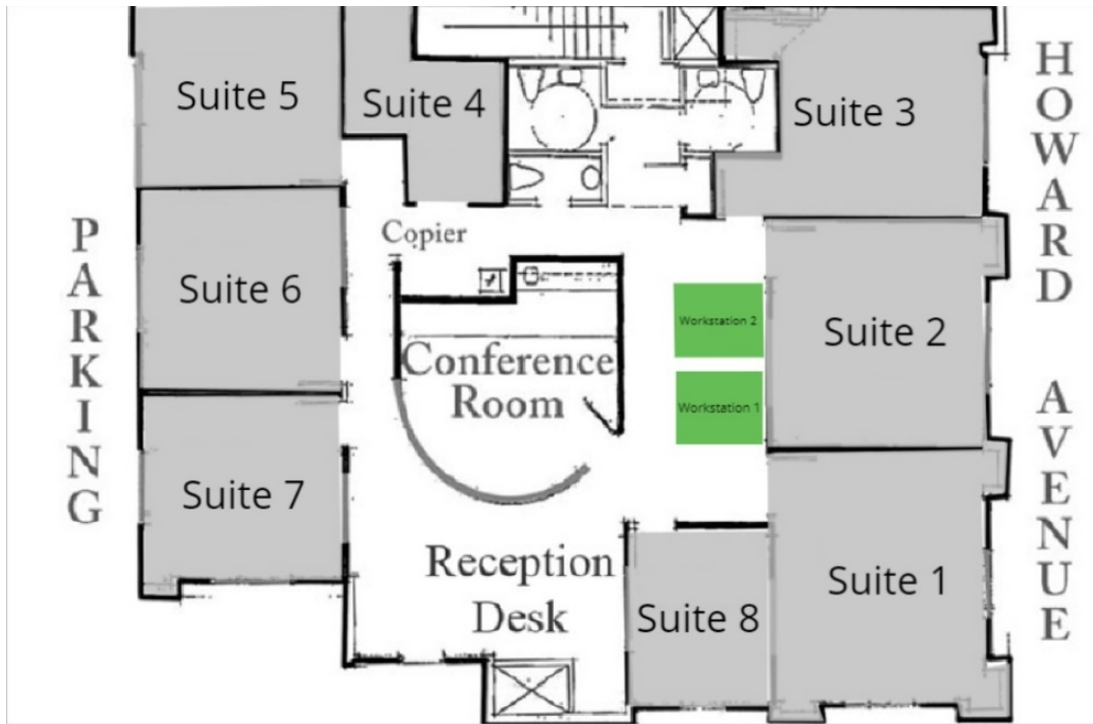
Located in SoHo/Hyde Park area of South Tampa, south of I-275 and 60 and north of the Selmon Expressway, offering easy access to surrounding areas.



SoHo Executive Suites

711 S Howard Ave , Tampa, FL 33606

Lease Spaces



LEASE INFORMATION

Lease Type:	-	Lease Term:	Negotiable
Total Space:	-	Lease Rate:	Negotiable

AVAILABLE SPACES

SUITE	TENANT	SIZE (SF)	LEASE TYPE	LEASE RATE	DESCRIPTION
Workstation 1	-	50 SF	Full Service	\$395 per month	This open work station is a private desk in the open common area. Perfect as an add on to an existing suite or for someone who just needs a place to work, access to the amenities and enough space for a few personal belongings without taking on the expense of a larger office. Initial estimated monthly rent: \$427 (includes base rate + sales tax)
Workstation 2	-	50 SF	Full Service	\$395 per month	This open work station is a private desk in the open common area. Perfect as an add on to an existing suite or for someone who just needs a place to work, access to the amenities and enough space for a few personal belongings without taking on the expense of a larger office. Initial estimated monthly rent: \$427 (includes base rate + sales tax)



SoHo Executive Suites

711 S Howard Ave , Tampa, FL 33606

Additional Photos



Bay Street Commercial | 611 West Bay Street | Tampa, FL 33606 | 813.625.2375 | www.baystreetcommercial.com

4

For More Information:

813-254-6756 | EXT 78

Property Webpage: www.properties.baystreetcommercial.com/286910-lease

Michael Braccia, P.A. | mike@baystreetcommercial.com

Scott Shimberg | scott@baystreetcommercial.com





SoHo Executive Suites

711 S Howard Ave , Tampa, FL 33606

Additional Photos



Bay Street Commercial | 611 West Bay Street | Tampa, FL 33606 | 813.625.2375 | www.baystreetcommercial.com

5

For More Information:

813-254-6756 | EXT 78

Property Webpage: www.properties.baystreetcommercial.com/286910-lease

Michael Braccia, P.A. | mike@baystreetcommercial.com

Scott Shimberg | scott@baystreetcommercial.com





SoHo Executive Suites

711 S Howard Ave , Tampa, FL 33606

Workstations 1 & 2



Bay Street Commercial | 611 West Bay Street | Tampa, FL 33606 | 813.625.2375 | www.baystreetcommercial.com

6

For More Information:

813-254-6756 | EXT 78

Property Webpage: www.properties.baystreetcommercial.com/286910-lease

Michael Braccia, P.A. | mike@baystreetcommercial.com

Scott Shimberg | scott@baystreetcommercial.com

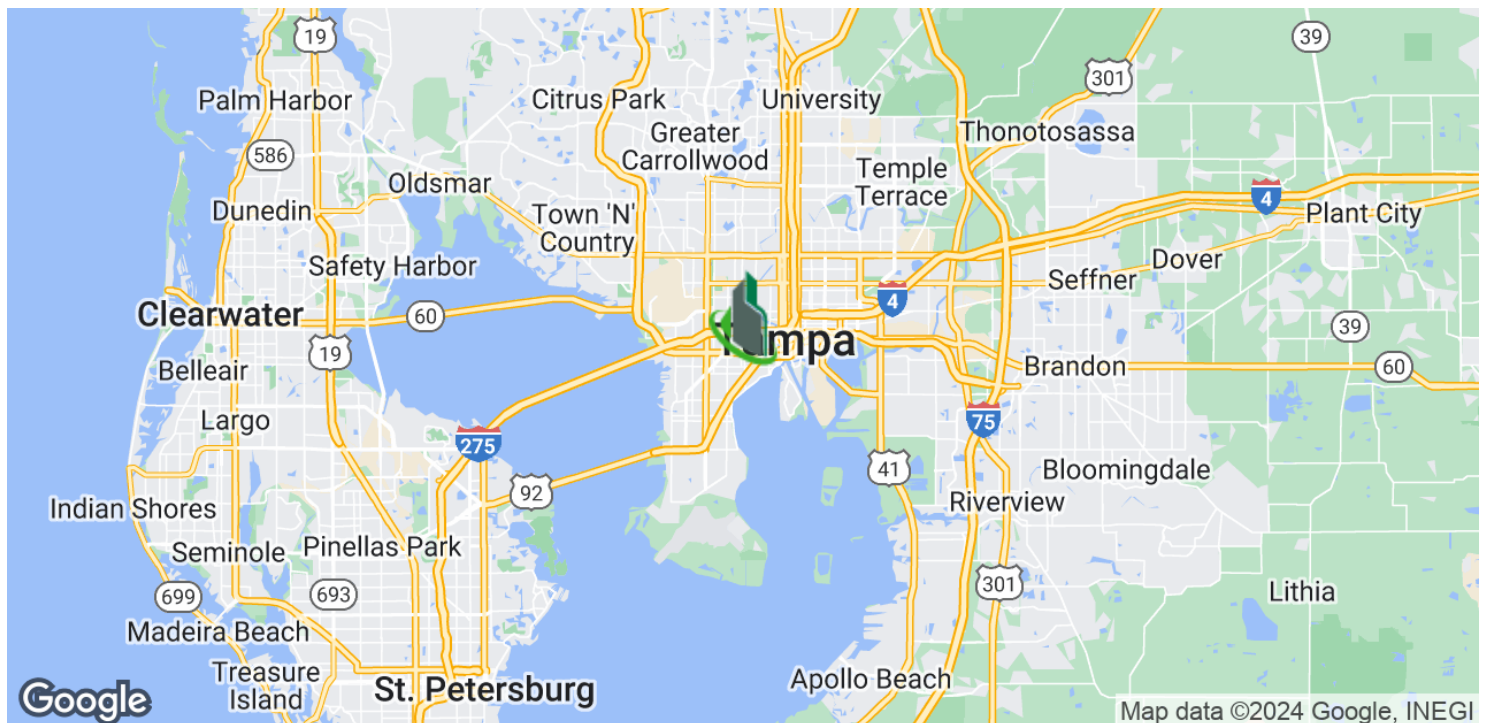
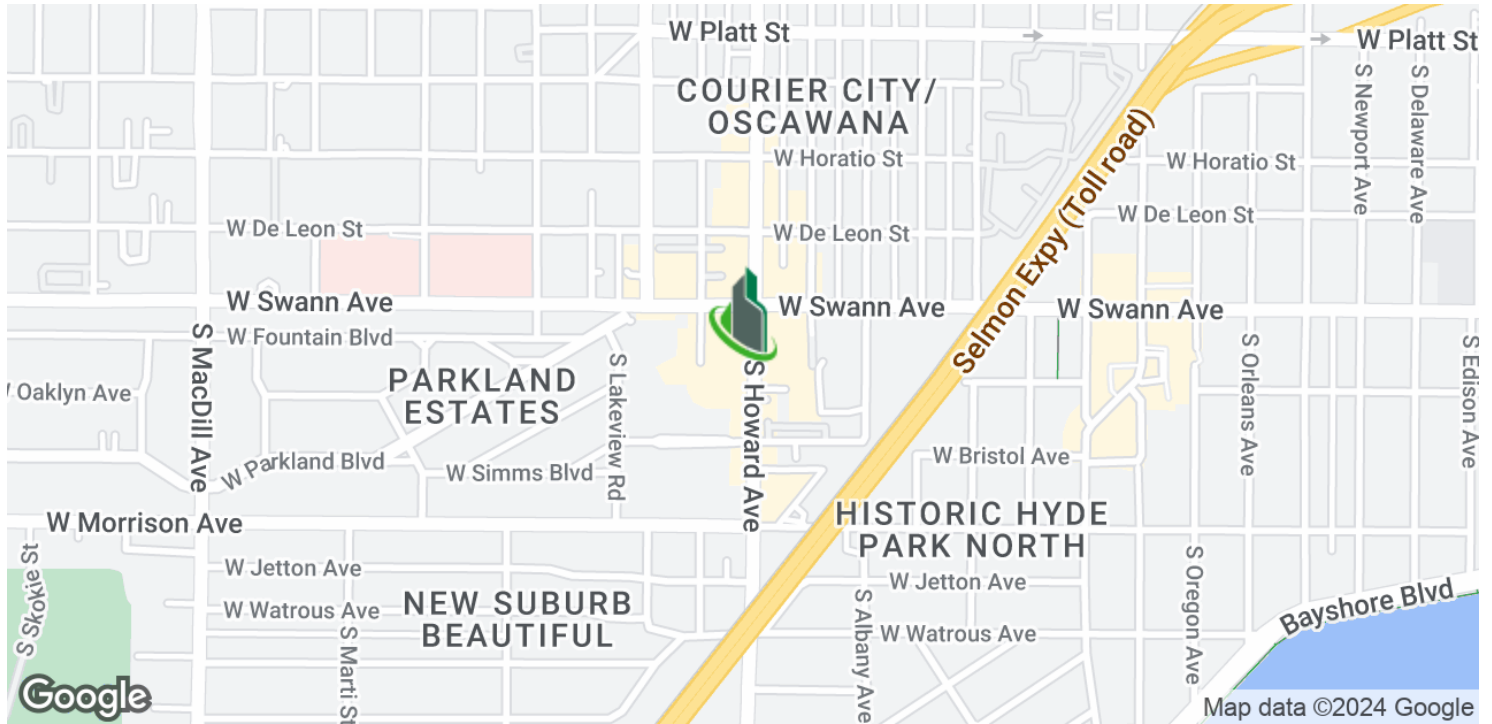




SoHo Executive Suites

711 S Howard Ave , Tampa, FL 33606

Location Maps



Bay Street Commercial | 611 West Bay Street | Tampa, FL 33606 | 813.625.2375 | www.baystreetcommercial.com

7

For More Information:

813-254-6756 | EXT 78

Property Webpage: www.properties.baystreetcommercial.com/286910-lease

Michael Braccia, P.A. | mike@baystreetcommercial.com

Scott Shimberg | scott@baystreetcommercial.com

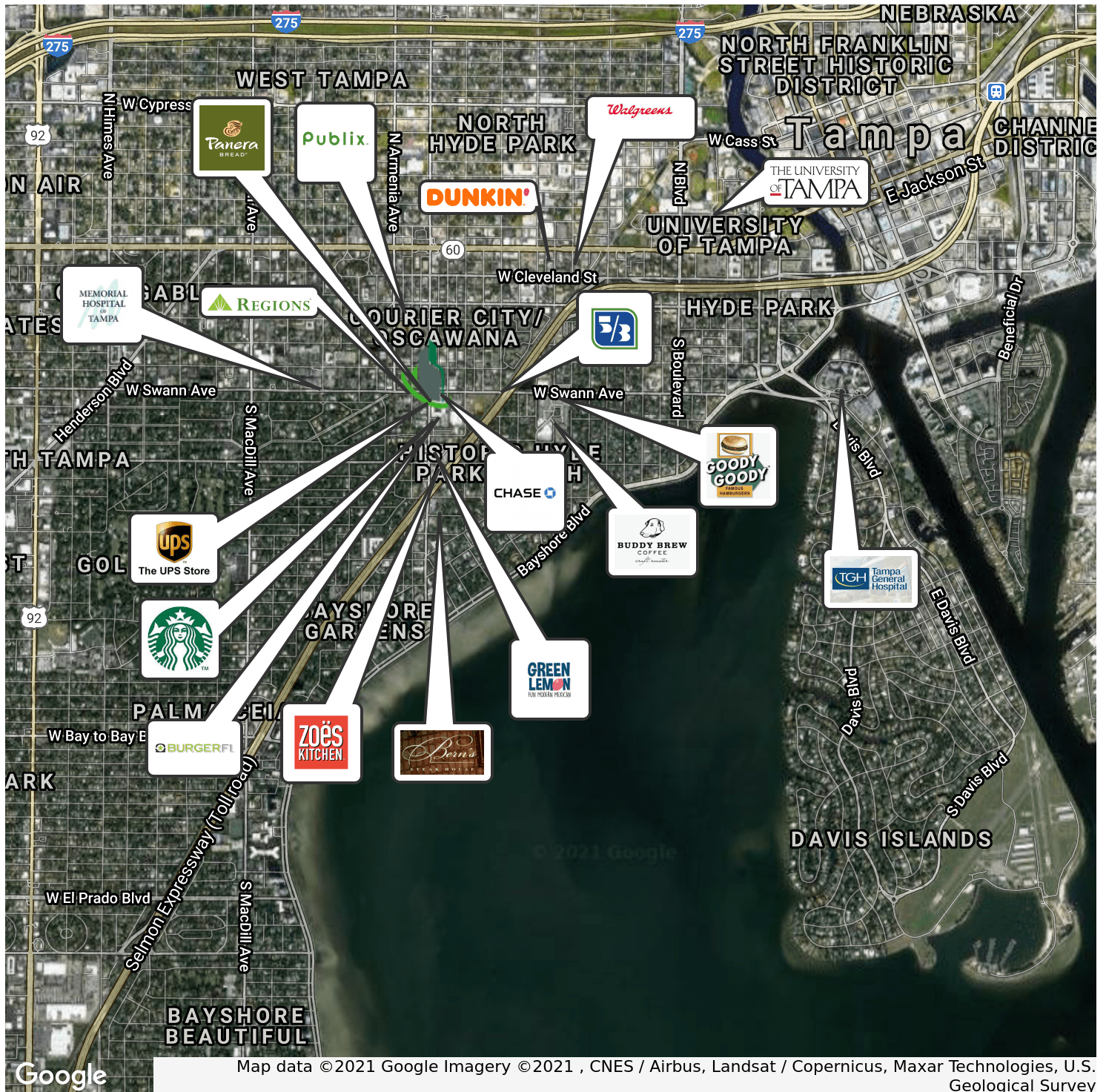




SoHo Executive Suites

711 S Howard Ave , Tampa, FL 33606

Retailer Map



Bay Street Commercial | 611 West Bay Street | Tampa, FL 33606 | 813.625.2375 | www.baystreetcommercial.com

8

For More Information:

813-254-6756 | EXT 78

Property Webpage: www.properties.baystreetcommercial.com/286910-lease

Michael Braccia, P.A. | mike@baystreetcommercial.com

Scott Shimberg | scott@baystreetcommercial.com

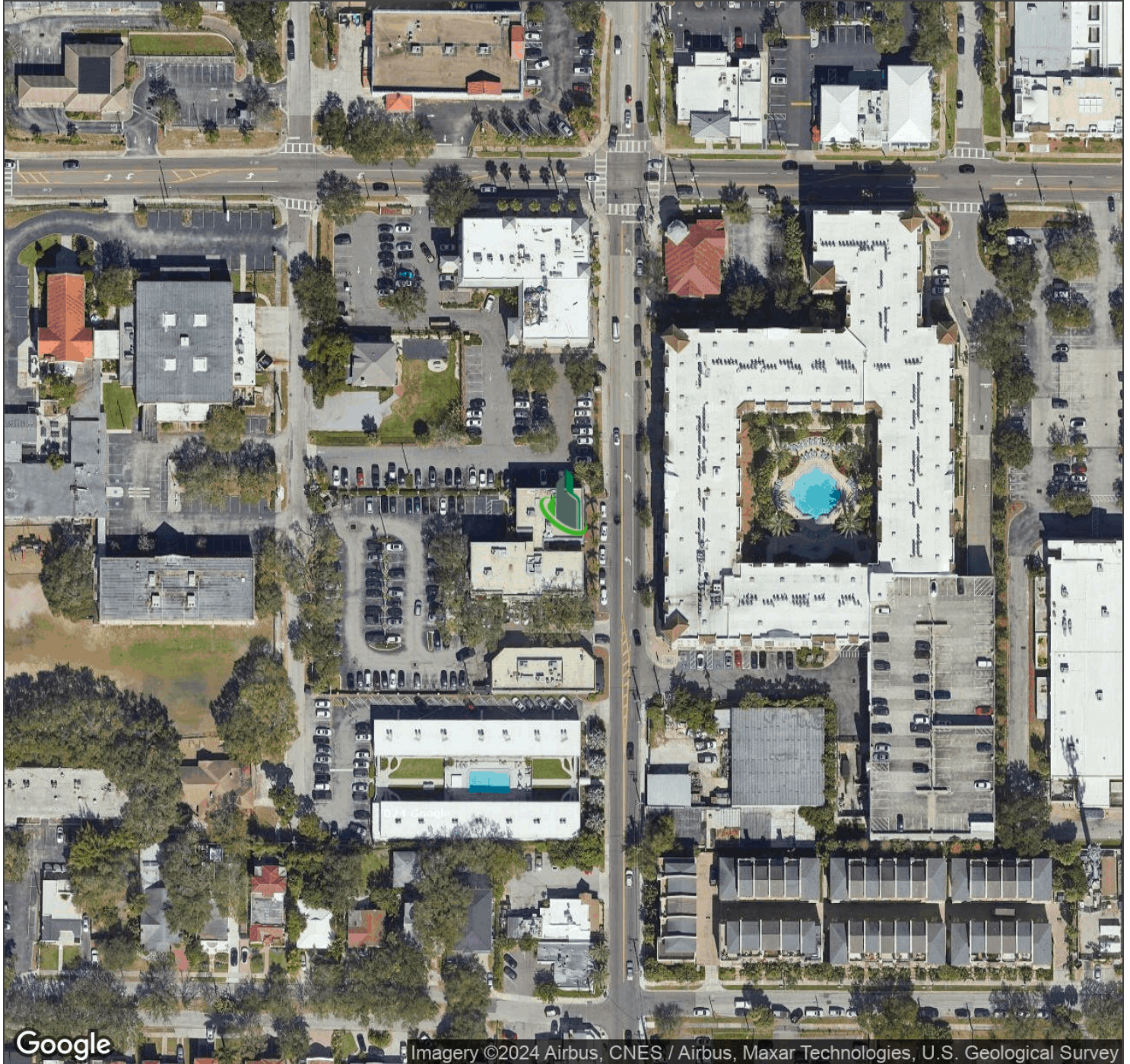




SoHo Executive Suites

711 S Howard Ave , Tampa, FL 33606

Aerial Map



Bay Street Commercial | 611 West Bay Street | Tampa, FL 33606 | 813.625.2375 | www.baystreetcommercial.com

9

For More Information:

813-254-6756 | EXT 78

Property Webpage: www.properties.baystreetcommercial.com/286910-lease

Michael Braccia, P.A. | mike@baystreetcommercial.com

Scott Shimberg | scott@baystreetcommercial.com

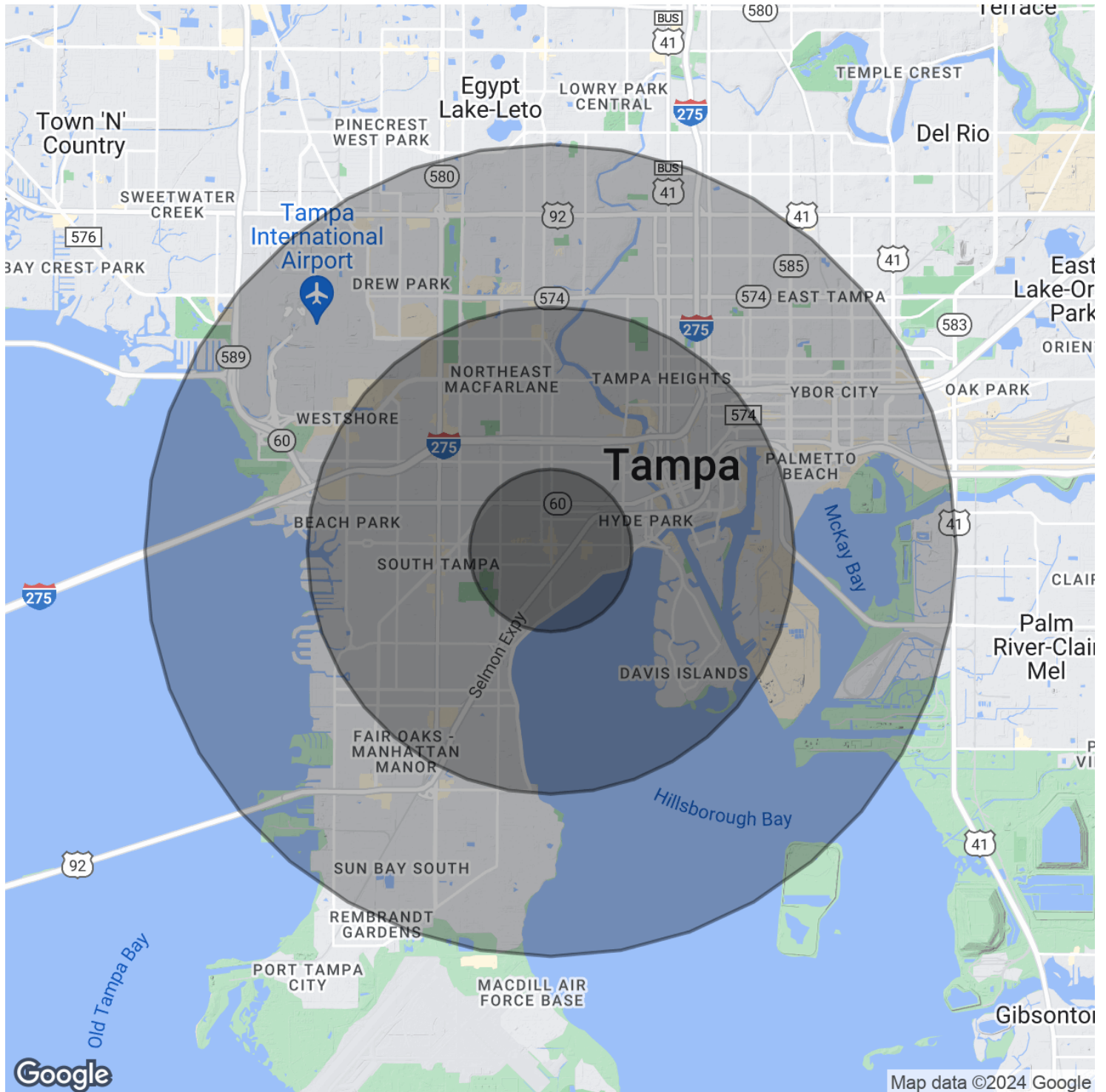




SoHo Executive Suites

711 S Howard Ave , Tampa, FL 33606

Demographics Map & Report



Bay Street Commercial | 611 West Bay Street | Tampa, FL 33606 | 813.625.2375 | www.baystreetcommercial.com

10

For More Information:

813-254-6756 | EXT 78

Property Webpage: www.properties.baystreetcommercial.com/286910-lease

Michael Braccia, P.A. | mike@baystreetcommercial.com

Scott Shimberg | scott@baystreetcommercial.com





SoHo Executive Suites

711 S Howard Ave , Tampa, FL 33606

Demographics Map & Report

POPULATION

	1 MILE	3 MILES	5 MILES
Total Population	13,922	93,663	201,017
Average age	37.5	38.0	37.4
Average age (Male)	36.7	36.6	36.0
Average age (Female)	37.7	39.2	38.9

HOUSEHOLDS & INCOME

	1 MILE	3 MILES	5 MILES
Total households	6,950	42,127	87,390
# of persons per HH	2.0	2.2	2.3
Average HH income	\$94,788	\$90,501	\$73,329
Average house value	\$527,574	\$453,835	\$344,509

ETHNICITY (%)

	1 MILE	3 MILES	5 MILES
Hispanic	15.3%	21.5%	25.4%

RACE

	1 MILE	3 MILES	5 MILES
Total Population - White	11,890	71,638	144,368
% White	85.4%	76.5%	71.8%
Total Population - Black	1,371	15,975	41,284
% Black	9.8%	17.1%	20.5%
Total Population - Asian	215	2,226	5,318
% Asian	1.5%	2.4%	2.6%
Total Population - Hawaiian	27	79	129
% Hawaiian	0.2%	0.1%	0.1%
Total Population - American Indian	49	619	1,937
% American Indian	0.4%	0.7%	1.0%
Total Population - Other	171	1,909	4,326
% Other	1.2%	2.0%	2.2%

TRAFFIC COUNTS

S. Howard Ave & W. Swann Ave	10,500/day
------------------------------	------------

** Demographic data derived from 2020 ACS - US Census*

For More Information:

813-254-6756 | EXT 78

Property Webpage: www.properties.baystreetcommercial.com/286910-lease

Michael Braccia, P.A. | mike@baystreetcommercial.com

Scott Shimberg | scott@baystreetcommercial.com